

SPRING
2022

Landau®

WE FIT
YOUR
STYLE



urbane

Landau

smitten

EXPAND YOUR SCRUB COLLECTION WITH NEW SPRING SCRUB STYLES!

This Spring, show up to class or work in these new styles - including three new jogger scrub pants - designed with hard-working professionals in mind.



- Page 4: New Styles
- Page 18: Urbane Impulse
- Page 24: The ICON Collection by Urbane
- Page 28: Urbane Aspire
- Page 30: Urbane Performance
- Page 36: Urbane Align
- Page 38: Urbane Ultimate
- Page 43: Urbane Essentials
- Page 46: ProFlex by Landau
- Page 56: Landau Essentials
- Page 62: Landau for Men
- Page 66: Scrub Zone by Landau
- Page 72: All Day by Landau
- Page 74: Smitten
- Page 78: Lab Coats
- Page 88: Accessories

LOOK FOR OUR



DESIGNATION
THROUGHOUT
THE BOOK.

Follow us on Instagram @landauuniforms & @urbanescrubs

urbane

Landau

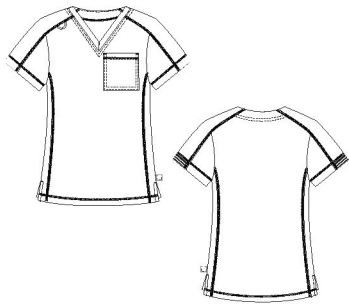




NEW STYLES

TUCKABLE

urbane
IMPULSE



Pocket detail



Sleeve detail



9108LKA Urbane Impulse Women's Tuckable Scrub Top

MODERN TAILORED FIT

- 76% Polyester/24% Spandex
- Banded V-neckline
- Shadow stripe elastic trim on sleeve inserts
- Badge loop
- Chest pocket
- Cover-stitching detail
- Side vents

Sizes: XSM-3XL
Medium Length: 25¾"

Black <small>BKLN</small>
True Navy <small>TNLN</small>
New Royal <small>NRLN</small>
Graphite <small>GRLN</small>
Ceil <small>BCLN</small>
Wine <small>RWLN</small>





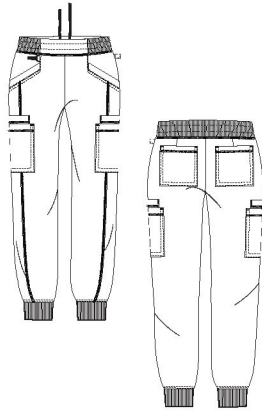
Pocket detail



urbane
IMPULSE



Cargo detail



**AVAILABLE
JANUARY**

B 9211LKA Urbane Impulse Women's Jogger Scrub Pants

CONTEMPORARY SLIM FIT

- 76% Polyester/24% Spandex
- 3/4 rib-knit waistband with internal drawcord and elastic
- Two hip pockets
- Two cargo pockets
- Two back pockets
- Bungee loop with instrument tape on wearer's right
- Seaming with cover-stitching detail
- Rib cuff

Regular: XSM-3XL (28½" inseam)

Petite: PXS-P2X (26" inseam)

Tall: TXS-TXL (30½" inseam)

Black <small>BKLG</small>
True Navy <small>TNLK</small>
New Royal <small>NRLK</small>
Graphite <small>GRLK</small>
Cell <small>BCLK</small>
Wine <small>RWLK</small>

TUCKABLE

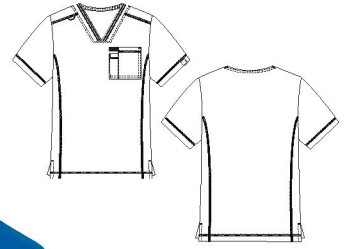
A 9911LKA Urbane Impulse Men's Tuckable Scrub Top

MODERN TAILORED FIT

- 76% Polyester/24% Spandex
- V-neck with stripe elastic
- Shoulder seams
- Badge loop on wearer's right shoulder
- Chest pocket with instrument pocket and tape on wearer's left
- Cover-stitching detail
- Side vents

Sizes: SML-3XL
Medium Length: 28⁵/₈"

- Black BKLG
- True Navy TNLK
- New Royal NRLK
- Graphite GRLK



A



Pocket detail



B

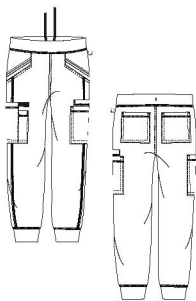
B 9913LKA Urbane Impulse Men's Jogger Scrub Pants

MODERN TAILORED FIT

- 76% Polyester/24% Spandex
- Elastic waistband with internal drawcord
- Two hip pockets with stripe elastic
- Two cargo pockets with additional instrument pocket tape and additional layered pocket
- Two back pockets
- Seaming with cover-stitching detail
- Self fabric cuffs

Regular: SML-3XL (30" inseam)
Short: SSM-S3X (27¹/₂" inseam)
Tall: TSM-TXL (32" inseam)

- Black BKLG
- True Navy TNLK
- New Royal NRLK
- Graphite GRLK



Cuff detail

IMPULSE MEN'S STYLES

NEW STYLES



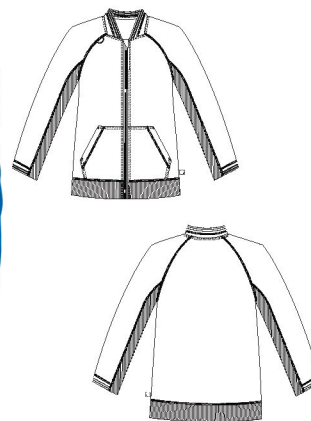
C



Pocket detail

urbane

IMPULSE



C 9914LKA Urbane Impulse Men's Warm-Up Scrub Jacket

MODERN TAILORED FIT

- 76% Polyester/24% Spandex and 96% Polyester/ 4% Spandex
- Athletic inspired neckline with stripe elastic
- Raglan sleeve
- Rib-knit sleeve inserts & hem
- Stripe elastic detail at sleeves
- Zipper closure with zipper garage
- Two front pockets
- Cover-stitching detail

Sizes: SML-3XL
Medium Length: 27⁵/₈"

Black <small>BKLG</small>
True Navy <small>TNLK</small>
New Royal <small>NRLK</small>
Graphite <small>GRLK</small>



Badge loop

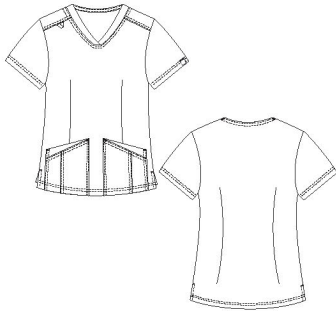


urbane

ASPIRE



A



Pocket detail

- Black** BKLG
- True Navy** TNLK
- New Royal** NRLK
- Graphite** GRLK

A 9110DW Urbane Aspire Women's V-Neck Scrub Top

MODERN TAILORED FIT

- 97% Polyester/3% Spandex
- Soft curve V-neckline
- Shoulder seams
- Badge loop
- Front and back waist darts for added shape
- Side vents

Sizes: XSM-3XL
Medium Length: 26½"



4-way stretch



Luxurious Comfort



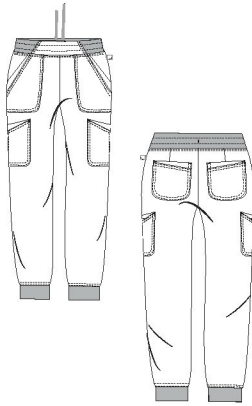
Chemical-Free
Wrinkle Resistance

AVAILABLE
JANUARY

urbane
ASPIRE



Pocket detail



Cargo pocket

B



retailer
exclusive

B 9202DW Urbane Aspire Women's Jogger Scrub Pants

MODERN TAILORED FIT

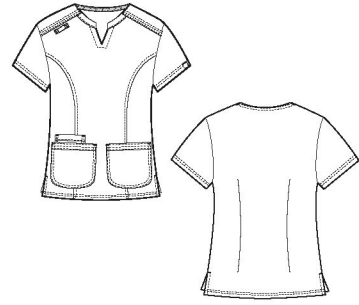
- 97% Polyester/3% Spandex and 90% Polyester/10% Spandex
- 3/4 knit waistband with internal elastic
- Internal non-slip ribbed stretch drawcord
- Two angled hip pockets
- Two cargo pockets with crossover band detail
- Two back pockets
- Elastic cuff

Regular: XSM-3XL (28½" inseam)

Petite: PXS-P2X (26" inseam)

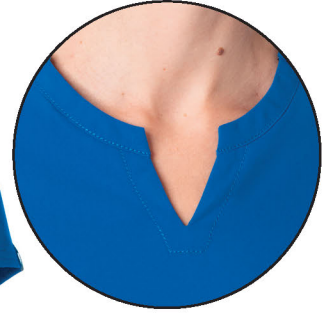
Tall: TXS-TXL (30½" inseam)

- Black BKLG
- True Navy TNLK
- New Royal NRLK
- Graphite GRLK



A

urbane
ICON



Neckline detail



Pocket detail

A 9730TZ Urbane Icon Women's Notch-Neck Scrub Top

CONTEMPORARY SLIM FIT

- 75% Polyester/20% Rayon/5% Spandex
- Two top-entry pockets
- Banded stylized notch neckline
- Signature ICON taping at back neck
- Shoulder seams
- Three pockets with decorative stitching
- Badge tab
- Front princess seams
- Back waist darts for added shape
- Premium topstitching detail

Sizes: XSM-3XL
Medium Length: 25 7/8"

Black BKTZ
New Royal NRTZ
True Navy TNTZ
Graphite GRTZ
Cell BCTZ
Heather Grey HGTZ
New Wine NRWTZ

Incredibly Soft

Moisture Wicking

4-Way Stretch

Wrinkle Resistant

B



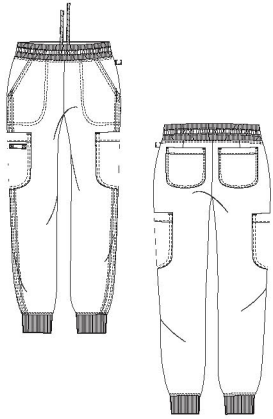
Cargo pocket



Back pocket












Pocket detail



B 9729TZ Urbane Icon Women's Jogger Scrub Pants

CONTEMPORARY SLIM FIT

-  75% Polyester/20% Rayon/5% Spandex and 96% Polyester/4% Spandex
-  Rib-knit waistband with elastic
-  Signature ICON taping drawcord
-  Two angled hip pockets
-  Premium topstitching detail
-  Two cargo pockets
-  Utility tab
-  Two back pockets
-  Rib-knit cuffs

Regular: XSM-3XL (28½" inseam)
Petite: PXS-P2X (26" inseam)
Tall: TXS-TXL (30½" inseam)

Black BKTZ
New Royal NRTZ
True Navy TNTZ
Graphite GRTZ
Cell BCTZ
Heather Grey HGTZ
New Wine NRWTZ

urbane
 ICON

urbane[®]

PERFORMANCE



4-Way Stretch



Moisture Wicking



Fade Resistant



Chemical-Free
Wrinkle Resistance

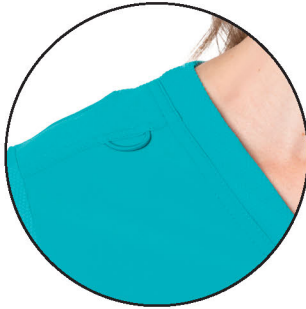


TUCKABLE

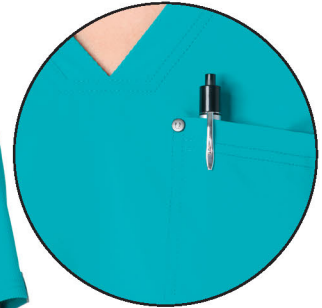
urbane

PERFORMANCE

NEW STYLES

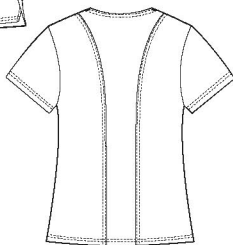
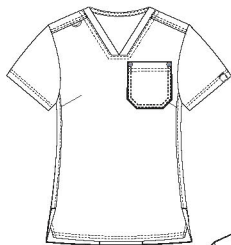


Badge loop detail



Pocket detail

A



A 9744FS Urbane Performance Women's Tuckable Scrub Top

MODERN TAILORED FIT

- 95% Polyester/5% Spandex and 80% Nylon/20% Spandex
- Textured knit banded V-neckline
- Textured knit sleeves, side and back panels
- Chest pocket with branded rivets on wearer's left
- Bungee loop on wearer's right
- Double-needle topstitching detail
- Side angled vents

Sizes: XSM-3XL
Medium Length: 27 1/8"

- Black BKFS
- Galaxy BGFS
- Teal BTFS
- New Royal NRFS
- True Navy TNFS



COMING SOON

Landau ProFlex



Chemical-free wrinkle resistance

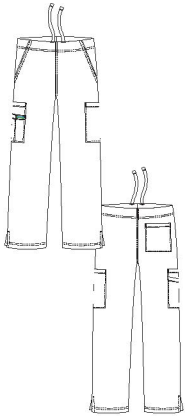


Two-way stretch fabric for comfort and movement



Fade resistant

A



Cargo pocket detail



Black BKPR
Royal BEPR
Ceil BCPR
Steel STPR
True Navy TNPR
Graphite GRPR
Wine RWPR

A 2104 ProFlex Unisex Cargo Scrub Pants

MODERN TAILORED FIT

- 73% Polyester/25% Rayon/2% Spandex
- ProFlex signature green internal drawcord
- Two hip pockets
- One back pocket
- Two cargo pockets with an additional pocket and logo tab
- Side vents

Regular: XSM-5XL (30" inseam)
 Short: SSM-S3X (27½" inseam)
 Tall: TSM-TXL (32" inseam)

STUDENT PROGRAM

AVAILABLE
FEBRUARY



Zip closure detail



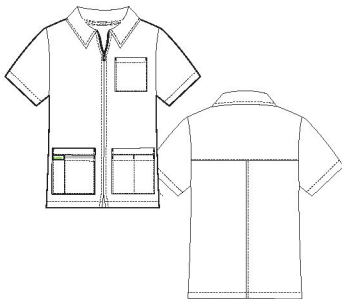
B 4173PRV ProFlex Women's Zip-Front Student Tunic

MODERN TAILORED FIT

- 73% Polyester/25% Rayon/2% Spandex
- Modern collar
- ProFlex signature green detail in the back neck
- Zipper closure
- Five pockets
- ProFlex logo tape
- Scissor tape inside pocket
- Princess seams for shaping
- Back darts for added shape

Sizes: XSM-5XL
Medium Length: 28"

White WWPR



Top pocket detail

C 4263PRV ProFlex Men's Zip-Front Student Tunic

MODERN TAILORED FIT

- 73% Polyester/25% Rayon/2% Spandex
- Modern collar
- ProFlex signature green detail in back neck
- Zipper closure
- Five hip pockets
- ProFlex logo tape
- Scissor tape inside pocket
- Back yoke

Sizes: XSM-5XL
Medium Length: 29½"

White WWPR



DESIGNED FOR EVERY ASPECT OF YOUR LIFE.

No matter how busy
your day becomes,
feel comfortable
and empowered in
scrubs designed to
move with you.

urbane[®]

Follow us on Instagram @urbanescrubs





urbane

urbane
IMPULSE



A 9107 Urbane Impulse Women's V-Neck Scrub Top

CONTEMPORARY SLIM FIT

- 76% Polyester/24% Spandex
- V-neck with decorative cover stitch
- Shadow stripe elastic trim on sleeves
- Badge loop
- Bungee loop with instrument tape
- Two angled top-entry pockets
- Cover-stitching detail
- Curved hem
- Side vent
- Back darts

Sizes: XSM-3XL
Medium Length: 26"

- Black EKLIK
- True Navy TNLK
- New Royal NRLK
- Graphite GRLK

B 9108LKA Urbane Impulse Women's Tuckable Scrub Top

MODERN TAILORED FIT

- 76% Polyester/24% Spandex
- Banded V-neckline
- Shadow stripe elastic trim on sleeve inserts
- Badge loop
- Chest pocket
- Cover-stitching detail
- Side vents

Sizes: XSM-3XL
Medium Length: 25¾"

- Black EKLIK
- True Navy TNLK
- New Royal NRLK
- Graphite GRLK

AVAILABLE
MARCH

Super Soft
 Maximum Stretch
 Made to Endure



Fashion detail



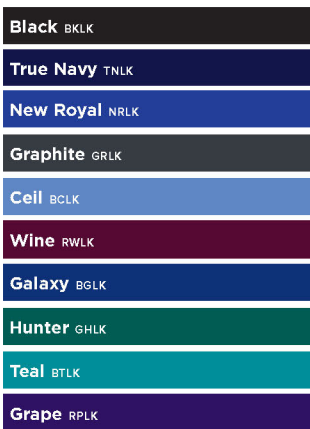
Pocket detail

C 9105 Urbane Impulse Women's V-Neck Scrub Top

CONTEMPORARY SLIM FIT

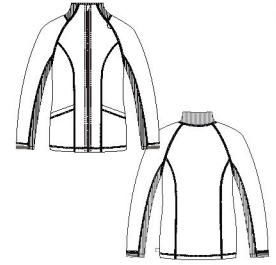
- 76% Polyester/24% Spandex
- Shadow stripe elastic V-neck
- Front and back princess seams
- Coverstitching throughout
- Two top-entry pockets
- Badge loop on shoulder
- Side vents

Sizes: XSM-3XL
Medium Length: 26 1/8"



NEW
NEW
NEW
NEW

D



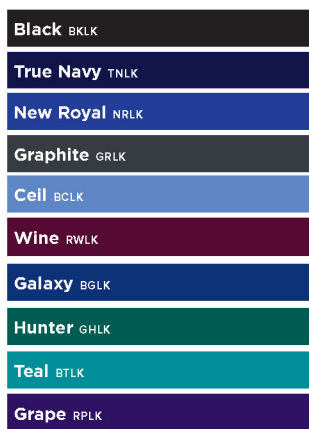
Pocket detail

D 9742 Urbane Impulse Women's Warm-Up Scrub Jacket

CONTEMPORARY SLIM FIT

- 76% Polyester/24% Spandex
- Moisture wicking
- Fade resistant
- Wrinkle resistant
- Extreme stretch
- 2 angled top-entry pockets
- Raglan sleeve with thumb hole and shadow stripe elastic trim.
- Front and back princess seams provide subtle shaping

Sizes: XSM-3XL
Medium Length: 27 3/8"

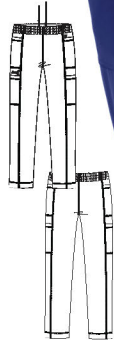


NEW
NEW
NEW
NEW

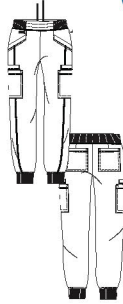
Elevated, activewear scrubs.



A



B



A 9210 Urbane Impulse Women's Tapered-Leg Cargo Scrub Pants

CONTEMPORARY SLIM FIT

- 76% Polyester/24% Spandex
- Elastic waistband with internal drawcord
- Two hip pockets
- Two cargo pockets
- Seaming with cover-stitching detail
- Shadow stripe elastic trim at cuff
- Tapered leg

Regular: XSM-3XL (31" inseam)
 Petite: PXS-P2X (28½" inseam)
 Tall: TXS-TXL (33" inseam)

- Black** BKLG
- True Navy** TNLK
- New Royal** NRLK
- Graphite** GRLK

B 9211LKA Urbane Impulse Women's Jogger Scrub Pants

CONTEMPORARY SLIM FIT

- 76% Polyester/24% Spandex
- 3/4 rib-knit waistband with internal drawcord and elastic
- Two hip pockets
- Two cargo pockets
- Two back pockets
- Bungee loop with instrument tape on wearer's right
- Seaming with cover-stitching detail
- Rib cuff

Regular: XSM-3XL (28½" inseam)
 Petite: PXS-P2X (26" inseam)
 Tall: TXS-TXL (30½" inseam)

- Black** BKLG
- True Navy** TNLK
- New Royal** NRLK
- Graphite** GRLK

urbane
 IMPULSE



C

C 9207 Urbane Impulse Women's Straight-Leg Cargo Scrub Pants

CONTEMPORARY SLIM FIT

- 76% Polyester/24% Spandex
- Internal drawstring
- Coverstitching throughout
- Two angled hip pockets
- Two cargo pockets
- Side vents

Regular: XSM-3XL (30½" inseam)
 Petite: PXS-P2X (28" inseam)
 Tall: TXS-TXL (32½" inseam)

NEW
NEW
NEW
NEW

Black <small>BKLG</small>
True Navy <small>TNLK</small>
New Royal <small>NRLK</small>
Graphite <small>GRLK</small>
Cell <small>BCLK</small>
Wine <small>RWLK</small>
Galaxy <small>BGLK</small>
Hunter <small>GHLK</small>
Teal <small>BTLK</small>
Grape <small>RPLK</small>



D

D 9208 Urbane Impulse Women's Banded-Bottom Jogger Scrub Pants

CONTEMPORARY SLIM FIT

- 76% Polyester/24% Spandex
- Internal drawstring
- Coverstitching throughout
- Two angled hip pockets
- Two cargo pockets
- Shadow stripe elastic cuff at the ankle

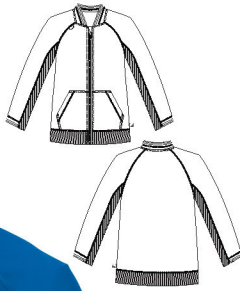
Regular: XSM-3XL (29" inseam)
 Petite: PXS-P2X (26½" inseam)
 Tall: TXS-TXL (31" inseam)



Fashion details

NEW
NEW
NEW
NEW

Black <small>BKLG</small>
True Navy <small>TNLK</small>
New Royal <small>NRLK</small>
Graphite <small>GRLK</small>
Cell <small>BCLK</small>
Wine <small>RWLK</small>
Galaxy <small>BGLK</small>
Hunter <small>GHLK</small>
Teal <small>BTLK</small>
Grape <small>RPLK</small>



A



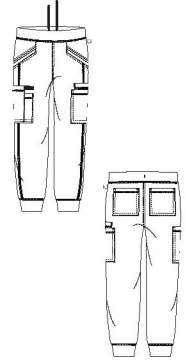
A 9914LKA Urbane Impulse Men's Warm-Up Scrub Jacket

MODERN TAILORED FIT

- 76% Polyester/24% Spandex and 96% Polyester/4% Spandex
- Athletic inspired neckline with stripe elastic
- Raglan sleeve
- Rib-knit sleeve inserts & hem
- Stripe elastic detail at sleeves
- Zipper closure with zipper garage
- Two front pockets
- Cover-stitching detail

Sizes: SML-3XL
Medium Length: 27½"

- Black BKLG
- True Navy TNLK
- New Royal NRLK
- Graphite GRLK



B



B 9913LKA Urbane Impulse Men's Jogger Scrub Pants

MODERN TAILORED FIT

- 76% Polyester/24% Spandex
- Elastic waistband with internal drawcord
- Two hip pockets with stripe elastic
- Two cargo pockets with additional instrument pocket tape and additional layered pocket
- Two back pockets
- Seaming with cover-stitching detail
- Self-fabric cuffs

Regular: SML-3XL (30" inseam)
Short: SSM-S3X (27½" inseam)
Tall: TSM-TXL (32" inseam)

- Black BKLG
- True Navy TNLK
- New Royal NRLK
- Graphite GRLK



Super Soft



Maximum Stretch



Made to Endure

MEN'S STYLES



C



urbane
IMPULSE

C 9911LKA Urbane Impulse Men's Tuckable Scrub Top

MODERN TAILORED FIT

- 76% Polyester/24% Spandex
- V-neck with stripe elastic
- Shoulder seams
- Badge loop on wearer's right shoulder
- Chest pocket with instrument pocket and tape on wearer's left
- Cover-stitching detail
- Side vents

Sizes: SML-3XL
Medium Length: 28 5/8"

- Black** BKLC
- True Navy** TNLK
- New Royal** NRLK
- Graphite** GRLK

INTRODUCING NEW MEN'S IMPULSE, FEATURING SCRUB STYLES THAT KEEP UP WITH WHAT MOTIVATES YOU TO MOVE.



urbane
IMPULSE



A

AVAILABLE
MARCH

A 9730TZ Urbane Icon Women's Notch-Neck Scrub Top

CONTEMPORARY SLIM FIT

- 75% Polyester/20% Rayon/5% Spandex
- Two top-entry pockets
- Banded stylized notch neckline
- Signature ICON taping at back neck
- Shoulder seams
- Three pockets with decorative stitching
- Badge tab
- Front princess seams
- Back waist darts for added shape
- Premium topstitching detail

Sizes: XSM-3XL
Medium Length: 25 7/8"

- Black BKTZ
- New Royal NRTZ
- True Navy TNTZ
- Graphite GRTZ
- Ceil BCTZ
- Heather Grey HGTZ
- New Wine NRWZ



B

B 9634 Urbane Icon Women's V-Neck Scrub Top

MODERN TAILORED FIT

- 75% Polyester/20% Rayon/5% Spandex
- Banded crossover neckline
- Signature ICON taping
- Bust darts
- Chest pocket with badge tab
- Back waist darts for added shape
- Premium topstitching detail

Sizes: XSM-3XL
Medium Length: 27 1/8"

- Black BKTZ
- New Royal NRTZ
- True Navy TNTZ
- Graphite GRTZ
- Heather Grey HGTZ
- New Wine NRWZ

NEW

The ICON Collection™
by urbane®



urbane
ICON

C 9734 Urbane Icon Women's V-Neck Scrub Top

CONTEMPORARY SLIM FIT

- 75% Polyester/20% Rayon/5% Spandex
- Two top-entry pockets
- Badge tab
- Premium topstitching detail
- Banded crossover neckline
- Unique shirrtail hem
- Bust darts

Sizes: XSM-3XL
Medium Length: 25½"

Black BKTZ
New Royal NRTZ
True Navy TNTZ
Graphite GRTZ
Ceil BCTZ
Heather Grey HGTZ
NEW New Wine NRWZ

D 9736 Urbane Icon Women's Warm-Up Scrub Jacket

CONTEMPORARY SLIM FIT

- 75% Polyester/20% Rayon/5% Spandex
- Rib-knit neckband and cuffs
- Signature ICON taping
- Hidden zipper closure
- Two top-entry pockets
- Badge tab
- Premium topstitching detail
- Unique shirrtail hem
- Back waist darts for added shape

Sizes: XSM-3XL
Medium Length: 27½"

Black BKTZ
New Royal NRTZ
True Navy TNTZ
Graphite GRTZ
Ceil BCTZ
Heather Grey HGTZ
NEW New Wine NRWZ



Incredibly Soft



Moisture Wicking



4-Way Stretch



Wrinkle Resistant



A 9729TZ Urbane Icon Women's Jogger Scrub Pants

CONTEMPORARY SLIM FIT

- 75% Polyester/20% Rayon/5% Spandex and 96% Polyester/4% Spandex
- Rib-knit waistband with elastic
- Signature ICON taping drawcord
- Two angled hip pockets
- Premium topstitching detail
- Two cargo pockets
- Utility tab
- Two back pockets
- Rib-knit cuffs

Regular: XSM-3XL (28½" inseam)
Petite: PXS-P2X (26" inseam)
Tall: TXS-TXL (30½" inseam)

- Black BKTZ
- New Royal NRTZ
- True Navy TNTZ
- Graphite GRTZ
- Ceil BCTZ
- Heather Grey HGTZ
- New Wine NRWZ



B 9635 Urbane Icon Women's Straight-Leg Cargo Scrub Pants

CONTEMPORARY SLIM FIT

- 75% Polyester/20% Rayon/5% Spandex
- Rib-knit waistband with elastic
- Signature ICON taping drawcord
- Two angled hip pockets
- Premium topstitching detail
- Small additional pocket
- Two cargo pockets
- Utility tab
- Two back pockets
- Straight leg with side vents

Regular: XSM-3XL (31" inseam)
Petite: PXS-P2X (28½" inseam)
Tall: TXS-TXL (33" inseam)

- Black BKTZ
- New Royal NRTZ
- True Navy TNTZ
- Graphite GRTZ
- Ceil BCTZ
- Heather Grey HGTZ
- New Wine NRWZ











urbane
 ICON



urbane
ICON

C 9735 Urbane Icon Women's Tapered-Leg Cargo Scrub Pants

CONTEMPORARY SLIM FIT

-  75% Polyester/20% Rayon/5% Spandex
-  3/4 rib-knit waistband with flat front
-  Signature ICON taping internal drawcord
-  Two angled hip pockets
-  Two back pockets
-  Cargo pocket with decorative topstitching
-  Utility tab
-  Back darts
-  Premium topstitching detail
-  Tapered leg with dolphin hem

Regular: XSM–3XL (30" inseam)
Petite: PXS–P2X (27½" inseam)
Tall: TXS–TXL (32" inseam)

- Black** BKTZ
- New Royal** NRTZ
- True Navy** TNTZ
- Graphite** GRTZ
- Cell** BCTZ
- Heather Grey** HGTZ
- NEW New Wine** NRWTZ

ICON brings sophistication and distinction together in incredibly soft, functional career wear.



A



B



C



AVAILABLE
JANUARY

NEW

A 9110DW Urbane Aspire Women's V-Neck Scrub Top

MODERN TAILORED FIT

- 97% Polyester/3% Spandex
- Soft curve V-neckline
- Shoulder seams
- Badge loop
- Front and back waist darts for added shape
- Side vents

Sizes: XSM-3XL
Medium Length: 26½"

Black BGDW
Graphite GRDW
New Royal NRDW
True Navy TNDW

B 9103 Urbane Aspire Women's V-Neck Scrub Top

CONTEMPORARY SLIM FIT

- 97% Polyester/3% Spandex
- Soft Curve V-Neck
- Two top-entry pockets with crossover band detail
- Badge loop
- Side vents
- Princess seams

Sizes: XSM-3XL
Medium Length: 26"

Black BGDW
Graphite GRDW
New Royal NRDW
True Navy TNDW

C 9220 Urbane Aspire Women's Warm-Up Scrub Jacket

CONTEMPORARY SLIM FIT

- 97% Polyester/3% Spandex
- Knit neckband, cuff, and hem detail
- Center-front zipper with silver teeth
- Two top-entry pockets
- Front and back princess seams

Sizes: Regular: XSM-3XL
Medium Length: 27"

Black BGDW
Graphite GRDW
New Royal NRDW
True Navy TNDW



urbane
ASPIRE

INDEPENDENT & OMNI CHANNEL
DISTRIBUTION ONLY



D 9202DW Urbane Aspire Women's Jogger Scrub Pants

MODERN TAILORED FIT

- 97% Polyester/3% Spandex and 90% Polyester/10% Spandex
- 3/4 knit waistband with internal elastic
- Internal non-slip ribbed stretch drawcord
- Two angled hip pockets
- Two cargo pockets with crossover band detail
- Two back pockets
- Rib-knit cuff

Regular: XSM-3XL (28½" inseam)
 Petite: PXS-P2X (26" inseam)
 Tall: TXS-TXL (30½" inseam)

- Black BKDW
- Graphite GRDW
- New Royal NRDW
- True Navy TNDW

E 9203 Urbane Aspire Women's Straight-Leg Cargo Scrub Pants

CONTEMPORARY SLIM FIT

- 97% Polyester/3% Spandex
- Knit waistband with internal elastic
- Internal non-slip ribbed stretch drawcord
- Two angled hip pockets
- Two back pockets
- Side vents
- Cargo pocket with crossover band detail

Sizes: Regular: XSM-3XL (30" inseam)
 Petite: PXS-P2X (28" inseam)
 Tall: TXS-TXL (32" inseam)

- Black BKDW
- Graphite GRDW
- New Royal NRDW
- True Navy TNDW



4-way stretch

Luxurious Comfort

**Chemical-Free
Wrinkle Resistance**



A

AVAILABLE
FEBRUARY

A 9744FS Urbane Performance Women's Tuckable Scrub Top

MODERN TAILORED FIT

- 95% Polyester/5% Spandex and 80% Nylon/20% Spandex
- Textured knit banded V-neckline
- Textured knit sleeves, side and back panels
- Chest pocket with branded rivets on wearer's left
- Bungee loop on wearer's right
- Double-needle topstitching detail
- Side angled vents

Sizes: XSM-3XL
Medium Length: 27 1/8"

Black BKFS

New Royal NRFS

True Navy TNFS

Galaxy BGFS

Teal BTFS



B

B 9738 Urbane Performance Women's V-Neck Scrub Top

CONTEMPORARY SLIM FIT

- 95% Polyester/5% Spandex with 80% Nylon/20% Spandex panels
- Textured knit banded crossover v-neckline
- Textured knit sleeves, side and back panels
- Two top-entry pockets with two layered angled pockets
- Bungee loop
- Double-needle topstitching detail
- Back vents

Sizes: XSM-5XL
Medium Length: 26 3/8"

Black BKFS

Graphite GRFS

New Royal NRFS

True Navy TNFS

Steel STFS

Cell BCFS

Galaxy BGFS

Wine RWFS

Teal BTFS

Hunter GHFS

Grape RPFS



C

C 9015 Urbane Performance Women's V-Neck Scrub Top

MODERN TAILORED FIT

- 95% Polyester/5% Spandex
- Moisture wicking
- Two angled welt pockets
- Small accessory pocket
- Side vents
- Bust and back waist darts

Sizes: XSM-5XL
Medium Length: 26"

Black BKFS

Graphite GRFS

New Royal NRFS

True Navy TNFS

Navy BNFS

White WWFS

Royal BEFS

Steel STFS

Cell BCFS

Galaxy BGFS

Wine RWFS

Teal BTFS

Hunter GHFS

COMING
SOON



D



D 9740 Urbane Performance Women's V-Neck Scrub Top

CONTEMPORARY SLIM FIT

- 95% Polyester/5% Spandex with 80% Nylon/20% Spandex Panels
- Textured knit banded crossover v-neckline
- Textured knit sleeve, side and back panels
- Textured knit cuffs
- Two top-entry pockets with two layered angled pockets
- Long sleeves
- Bungee loop
- Double-needle topstitching detail
- Back vents

Sizes: XSM-3XL
Medium Length: 26¼"

- Black BKFS
- Graphite GRFS
- New Royal NRFS
- True Navy TNFS
- Steel STFS
- Ceil BCFS



E



E 9872 Urbane Performance Women's Warm-Up Scrub Universal Jacket

MODERN TAILORED FIT

- 100% Polyester (single-sided fleece)
- Moisture wicking
- Three pockets
- Front princess seams
- Back waist darts
- Personal electronic device cord management system

Sizes: XSM-5XL
Medium Length: 27"

- Black BKFS
- Graphite GRFS
- New Royal NRFS
- True Navy TNFS
- Navy BNFS
- Royal BEFS
- Steel STFS



F



F 90003 Urbane Performance Women's Long-Sleeve Tee

CONTEMPORARY SLIM FIT

- 95% Rayon/5% Spandex
- Soft fabrication
- Crew neckline
- Long sleeves

Sizes: XSM-2XL
Medium Length: 26¾"

- Black BLACK
- True Navy TNAVY
- White WWFS
- Steel STEEL



urbane



4-Way Stretch



Moisture Wicking



Fade Resistant



Chemical-Free
Wrinkle Resistance



A



B

A 9320 Urbane Performance Women's Tapered-Leg Cargo Scrub Pants

MODERN TAILORED FIT

- 95% Polyester/5% Spandex
- Allover wicking
- Knit waistband with internal elastic
- Internal drawstring
- Two hip pockets
- Two cargo pockets with an additional zipper pocket
- Two back pockets
- Side vents
- Double-needle topstitching

Regular: XSM-2XL (30" inseam)
Petite: PXS-P2X (28" inseam)
Tall: TXS-TXL (32" inseam)

Black BKFS P2, T

Graphite GRFS P2, T

True Navy TNFS P2, T

Royal BEFS P2, T

B 9321 Urbane Performance Women's Banded-Bottom Jogger Scrub Pants

CONTEMPORARY SLIM FIT

- 95% Polyester/5% Spandex with 80% Nylon/20% Spandex panels
- Elastic waistband with silicon drawcord
- Cargo pockets on each side with two hip pockets
- Textured knit side inserts and jogger cuffs
- Quick Cool panels
- Double-needle topstitching detail

Regular: XSM-5XL (29" inseam)
PXS-P2X (26½" inseam)
TXS-TXL (31" inseam)

Black BKFS

Graphite GRFS

New Royal NRFS

True Navy TNFS

NEW Galaxy BGFS

Ceil BCFS

NEW Wine RWFS



urbane
PERFORMANCE

C 9739 Urbane Performance Women's Straight-Leg Cargo Scrub Pants

CONTEMPORARY SLIM FIT

- 95% Polyester/5% Spandex with 80% Nylon/20% Spandex panels
- Textured knit elastic waistband with silicon drawcord and grosgrain detail
- Three angled hip pockets
- Double-layered cargo pocket with instrument compartment
- Back darts and one back pocket
- Double-needle topstitching detail
- Quick Cool panels
- Side vents

Regular: XSM-5XL (31" inseam)
Petite: PXS-P2X (28½" inseam)
Tall: TXS-TXL (33" inseam)

Black BKFS	P2, T
Graphite GRFS	P2, T
New Royal NRFS	P2, T
True Navy TNFS	P2, T
Steel STFS	P2, T
Hunter GHFS	P2, T
Galaxy BGFS	P2, T
Cell BCFS	P2, T
Wine RWFS	P2, T
Grape RPFS	P2, T
Teal BTFS	P2, T

D 9312 Urbane Performance Women's Flare-Leg Cargo Scrub Pants

MODERN TAILORED FIT

- 95% Polyester/5% Spandex
- Six pockets
- Side vents
- Back darts
- Flat front with drawstring, back elastic

Regular: XSM-5XL (31" inseam)
Petite: PXS-P2X (28½" inseam)
Tall: TXS-TXL (33" inseam)

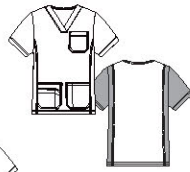
Black BKFS	P2, T
Graphite GRFS	P2, T
New Royal NRFS	P2, T
True Navy TNFS	P2, T
Navy BNFS	P2, T
White WWFS	P2, T
Royal BEFS	P2, T
Steel STFS	P2, T
Hunter GHFS	P2, T
Galaxy BGFS	P2, T
Cell BCFS	P2, T
Wine RWFS	P2, T
Mediterranean MEBFS	P2, T, †
Sky Blue BSBFS	P2, T, †
Spearmint GSFS	P2, T, †
Teal BTFS	P2, T

COLORS & STYLES	
P2	Up to P2X
P3	Up to P3X
T	Up to TXL
S2	Up to S2X
S3	Up to S3X
†	Select colors while supplies last.

Colors listed in order of popularity



A



B



C



A 9154 Urbane Performance Men's V-Neck Scrub Top

MODERN TAILORED FIT

- 95% Polyester/5% Spandex
- Banded v-neckline
- Chest pocket with Logo snap and tape detail
- Double-needle topstitching detail
- Side vents

Sizes: SML-5XL
Medium Length: 28¾"

B 9152 Urbane Performance Men's Quick Cool V-Neck Scrub Top

MODERN TAILORED FIT

- 95% Polyester/5% Spandex with 80% Nylon/ 20% Spandex panels
- Banded crossover v-neckline
- Textured knit sleeves and side inserts
- Chest pocket
- Two top-entry pockets with instrument compartments and one layered pocket
- Bungee loop
- Double-needle topstitching detail
- Quick Cool panels
- Side vents

Sizes: SML-5XL
Medium Length: 28¾"

C 9972 Urbane Performance Universal Men's Warm-Up Scrub Universal Jacket

MODERN TAILORED FIT

- 100% Polyester (single-sided fleece)
- Mock neck collar
- Center front zipper with clear pull
- Kangaroo pockets
- Knit cuffs and hem
- Fleece lined for warmth

Sizes: SML-5XL
Medium Length: 28"

Black BKFS	P2, T
Graphite GRFS	P2, T
New Royal NRFS	P2, T
True Navy TNFS	P2, T
Steel STFS	P2, T
Hunter GHFS	P2, T
Galaxy BGFS	P2, T
Cell BCFS	P2, T
Wine RWFS	P2, T
Teal BTFS	P2, T
Grape RPFS	P2, T

Black BKFS	
Graphite GRFS	
New Royal NRFS	
True Navy TNFS	
Steel STFS	
Hunter GHFS	
Galaxy BGFS	
Cell BCFS	
Wine RWFS	
Teal BTFS	
Grape RPFS	

Black BKFS	
Graphite GRFS	
New Royal NRFS	
True Navy TNFS	
Steel STFS	

MEN'S
STYLES

urbane
PERFORMANCE



D

D 9253 Urbane Performance Men's Straight-Leg Cargo Scrub Pants

MODERN TAILORED FIT

- 95% Polyester/5% Spandex with 80% Nylon/ 20% Spandex panels
- Textured knit elastic waistband and side inserts
- Silicon internal drawstring
- Belt loops and functional zipper fly and rubberized snap closure
- Two hip and two back pockets
- Double-layered cargo pocket with and instrument compartment
- Double-needle topstitching detail

Regular: SML-5XL (31" inseam)
Short: SSM-S3X (28½" inseam)
Tall: TSM-TXL (33" inseam)

Black BKFS	S2, T
Graphite GRFS	S2, T
New Royal NRFS	S2, T
True Navy TNFS	S2, T
Steel STFS	S2, T
Hunter GHFS	S2, T
Galaxy BGFS	S2, T
Cell BCFS	S2, T
Wine RWFS	S2, T
Teal BTFS	S2, T
Grape RPFS	S2, T



E

E 9254 Urbane Performance Men's Tapered-Leg Cargo Scrub Pants

MODERN TAILORED FIT

- 95% Polyester/5% Spandex
- Elastic waistband with drawstring
- Belt loops
- Two hip and one back pockets
- Cargo pocket with snap and decorative tape
- Double-needle topstitching detail
- Tapered leg

Regular: SML-5XL (31" inseam)
Small: SSM-S3X (28½" inseam)
Tall: TSM-TXL (33" inseam)

Black BKFS	P2, T
Graphite GRFS	P2, T
New Royal NRFS	P2, T
True Navy TNFS	P2, T
Steel STFS	P2, T
Hunter GHFS	P2, T
Galaxy BGFS	P2, T
Cell BCFS	P2, T
Wine RWFS	P2, T
Teal BTFS	P2, T
Grape RPFS	P2, T



F

F 9255FS Urbane Performance Men's Banded-Bottom Jogger Quick Cool Scrub Pants

MODERN TAILORED FIT

- 95% Polyester/5% Spandex and 80% Nylon/20% Spandex
- Textured knit elastic waistband and side inserts
- Silicon internal drawstring
- Functional zipper fly
- Two hip pockets
- Two back pockets
- Double-layered cargo pocket with an instrument compartment and single layer cargo pocket
- Double-needle topstitching detail
- Textured knit cuff
- Quick Cool panels

Regular: SML-2XL (30" inseam)
Small: SSM-S2X (27½" inseam)

Black BKFS	P2, T
Graphite GRFS	P2, T
New Royal NRFS	P2, T
True Navy TNFS	P2, T
Steel STFS	P2, T



4-Way Stretch



Moisture Wicking



Fade Resistant



Chemical-Free
Wrinkle Resistance

urbane
ALIGN



A

† While Supplies Last



B

† While Supplies Last



A 9877 Urbane Align Women's Warm-Up Scrub Jacket

CONTEMPORARY SLIM FIT

- 97% Polyester/3% Spandex
- Flattering shoulder seams
- Angled side and back seaming
- Bungee loop
- Two top-load pockets
- One zippered pocket for security

Sizes: XSM-2XL
Medium length: 27½"

- Black** BKKL
- Royal** BEKL
- Steel** STKL
- Graphite** GRKL

B 9166 Urbane Align Women's Crew Neck Scrub Top

CONTEMPORARY SLIM FIT

- 97% Polyester/3% Spandex
- Round neck with knit insert detail
- Princess seams on front and back
- Coverstitching detail throughout
- Bungee badge loop on shoulder
- Knit side panels
- Angled pockets
- Zipper pocket with mesh pocket bag
- Side vents

Sizes: XSM-2XL
Medium length: 27⅞"

- Black** BKKL
- Royal** BEKL
- Steel** STKL
- Graphite** GRKL

COLORS & STYLES	
P2	Up to P2X
P3	Up to P3X
T	Up to TXL
3X	Up to 3XL
†	Select colors while supplies last.

Colors listed in order of popularity

urbane
ALIGN



C 9167 Urbane Align Women's Crew Neck Scrub Top

CONTEMPORARY SLIM FIT

- 97% Polyester/3% Spandex
- Banded v-neck
- Flattering shoulder seams
- Moisture wicking
- Two top-load pockets
- One zippered pocket for security

Sizes: XSM-2XL
Medium length: 26³/₈"

Black BKKL
Royal BEKL
Steel STKL
Graphite GRKL
Ceil BCKL
Grape RPKL



D 9333 Urbane Align Women's Straight-Leg Cargo Scrub Pants

CONTEMPORARY SLIM FIT

- 97% Polyester/3% Spandex
- PWRcor™ waistband
- Internal flat elastic drawcord
- Angled slim-profile cargo pockets
- One zippered pocket for security
- Angled seams throughout

Regular: XSM-2XL (30¹/₂" inseam)
Petite: PXS-P2X (28" inseam)
Tall: TXS-TXL (32¹/₂" inseam)

Black BKKL	P2, T
Royal BEKL	P2, T
Steel STKL	P2, T
Graphite GRKL	P2, T, †
Ceil BCKL	P2, T
Grape RPKL	P2, T



E 9339 Urbane Align Women's Zipper-Bottom Cargo Scrub Pants

CONTEMPORARY SLIM FIT

- 97% Polyester/3% Spandex
- PWRcor™ waistband
- Coverstitching detail throughout
- Two angled hip pockets
- Seaming detail throughout
- Zipper detail on bottom leg
- Locking zipper pull stays in place

Regular: XSM-2XL (30" inseam)
Petite: PXS-P2X (27¹/₂" inseam)
Tall: TXS-TXL (32" inseam)

Black BKKL	P2, T
Royal BEKL	P2, T
Graphite GRKL	P2, T



Tech-Infused
4-Way Stretch



Made to Move
with You



360° Core Support



A

A 9577 Urbane Ultimate Women's Mock Wrap Neck Scrub Top

MODERN TAILORED FIT

- 54% Rayon/44% Polyester/2% Spandex
- Premium stretch fine
- Twill fabrication
- Six pockets
- Bungee loop
- Side vents
- Sizes: XSM-5XL**
- Medium Length: 26 $\frac{1}{8}$ "**



B

B 9063 Urbane Ultimate Women's V-Neck Scrub Top

CONTEMPORARY SLIM FIT

- 54% Rayon/44% Polyester/2% Spandex
- Four pockets
- Pen/badge loop
- Side vents
- Bust and back darts
- Sizes: XSM-5XL**
- Medium Length: 25 $\frac{7}{8}$ "**



C

C 9076 Urbane Ultimate Women's V-Neck Scrub Top

CONTEMPORARY SLIM FIT

- 54% Rayon/44% Polyester/2% Spandex
- V-neck with knit band
- Double-needle stitching
- Knit side panels for mobility
- Side vents for ease of movement
- Back seaming detail
- Back knit paneling on shoulder and sides for added mobility

Sizes: XSM-3XL
Medium Length: 26 $\frac{3}{8}$ "

Black	BKAH
Graphite	GRAH
True Navy	TNAH
Steel	STAH
Royal	BEAH
Navy	BNAH
White	wWAH †
Cell	BCAH
Wine	RWAH
Hunter	GHAH
Teal	BTAH
Caribbean	CBAH
Galaxy	BGAH
Sand	SAAH
True Red	TRAH
African Violet	PAVAH †
Orchid	VORAH †

Black	BKAH
Graphite	GRAH
True Navy	TNAH
Steel	STAH
Royal	BEAH
Navy	BNAH
Cell	BCAH
Wine	RWAH
Hunter	GHAH †
Teal	BTAH †
Caribbean	CBAH
Galaxy	BGAH †
True Red	TRAH †
Orchid	VORAH †

Black	BKAH
Graphite	GRAH
True Navy	TNAH
Steel	STAH
Royal	BEAH

F

F

F = Fashion color



D



D 9550 Urbane Ultimate Women's Sweetheart Neck Scrub Top

MODERN TAILORED FIT

- 54% Rayon/44% Polyester/2% Spandex
- Premium stretch fine twill fabrication
- Four pockets
- Front and back waist darts

Sizes: XSM-5XL
Medium Length: 26 3/8"



E



E 9871 Urbane Ultimate Women's Warm-Up Scrub Jacket

MODERN TAILORED FIT

- 54% Rayon/44% Polyester/2% Spandex
- Round neck
- Three pockets
- Instrument pocket
- Knit cuff
- Button front closure

Sizes: XSM-3XL
Medium Length: 28 3/8"

- Black BKAH
- Graphite GRAH
- True Navy TNAH †
- Steel STAH
- Royal BEAH
- Navy BNAH
- Cell BCAH
- Wine RWAH
- Teal BTAH †
- True Red TRAH †

- Black BKAH
- Graphite GRAH
- True Navy TNAH
- Steel STAH
- Royal BEAH
- Navy BNAH
- White WWAH †
- Cell BCAH
- Wine RWAH
- Hunter GH AH †
- Caribbean CBAH



2-Way Stretch



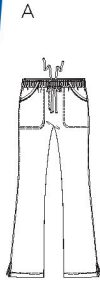
Soft Rayon Fabric



Fade Resistant



Chemical-Free
Wrinkle Resistance

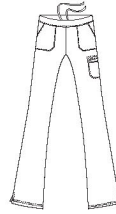


A 9306 Urbane Ultimate Women's Flare-Leg Scrub Pants

MODERN TAILORED FIT

- 54% Rayon/44% Polyester/2% Spandex
- Two pockets
- Side vents
- Full elastic waist
- Internal drawstring

Regular: XSM-5XL (31½" inseam)
 Petite: PXS-P3X (28½" inseam)
 Tall: TXS-TXL (33½" inseam)
 White available in XSM-3XL



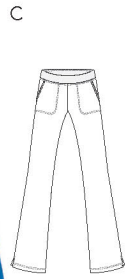
B 9329 Urbane Ultimate Women's Straight-Leg Scrub Pants

CONTEMPORARY SLIM FIT

- 54% Rayon/44% Polyester/2% Spandex
- Five pockets
- Side vents
- Back darts
- Elastic back waist
- Front drawstring

Regular: XSM-5XL (31" inseam)
 Petite: PXS-P3X (28½" inseam)
 Tall: TXS-TXL (33½" inseam)

† White Supplies Last



C 9330 Urbane Ultimate Women's Flare-Leg Yoga Scrub Pants

CONTEMPORARY SLIM FIT

- 54% Rayon/44% Polyester/2% Spandex
- Two pockets
- Side vents
- Back darts

Regular: XSM-5XL (31" inseam)
 Petite: PXS-P3X (28½" inseam)
 Tall: TXS-TXL (33½" inseam)

Black BKAH	P3, T
Royal BEAH	P3, T
Steel STAH	P3, T
Graphite GRAH	P3, T
True Navy TNAH	P3, T
Navy BNAH	P3, T
Cell BCAH	P3, T
Wine RWAH	P3, T
Hunter GH AH	P3, T
Teal BTAH	P3, T
Caribbean CBAH	P3, T
Galaxy BGAH	P3, T
True Red TRAH	P3, T
Sand SA AH	P3, T
White WWAH	P3, T †
Jazzberry JZAH	P3, T, †
Turquoise GTUAH	P3, T, †
F Orchid VORAH	P3, T †
F Sweet Lavender SWLAH	P3, T, †

Black BKAH	P3, T †
Royal BEAH	P3, T †
Steel STAH	P3, T †
Graphite GRAH	P3, T †
True Navy TNAH	P3, T †
Navy BNAH	P3, T †
Cell BCAH	P3, T †
Wine RWAH	P3, T †
Teal BTAH	P3, T †
Caribbean CBAH	P3, T †
Galaxy BGAH	P3, T †
True Red TRAH	P3, T †

Black BKAH	P3, T
Royal BEAH	P3, T
Steel STAH	P3, T
Graphite GRAH	P3, T
True Navy TNAH	P3, T
Navy BNAH	P3, T
Cell BCAH	P3, T
Wine RWAH	P3, T
Hunter GH AH	P3, T †
Teal BTAH	P3, T †
Caribbean CBAH	P3, T
Galaxy BGAH	P3, T †
True Red TRAH	P3, T †

urbane
ULTIMATE



D

D 9300 Urbane Ultimate Women's Straight-Leg Cargo Scrub Pants

MODERN TAILORED FIT

- 54% Rayon/44% Polyester/2% Spandex
- Flat front, elastic back waistband
- Internal drawstring
- Three pockets
- Premium stretch fine twill fabrication

Regular: XSM-5XL (31" inseam)
Petite: PXS-P3X (28½" inseam)
Tall: TXS-TXL (33½" inseam)



E



E 9337 Urbane Ultimate Women's Straight-Leg Yoga Scrub Pants

CONTEMPORARY SLIM FIT

- 54% Rayon/44% Polyester/2% Spandex
- PWRcor™ technology
- Internal drawstring
- Double-needle stitching
- Knit side panels for extra mobility
- Two knit cargo pockets with stretch ribbed cord detail
- Two back pockets with stretch ribbed cord detail

Regular: XSM-3XL (30½" inseam)
Petite: PXS-P2X (28" inseam)
Tall: TXS-TXL (32½" inseam)

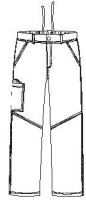
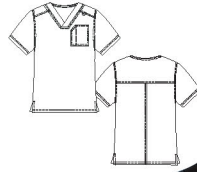
Black BKAH	P3, T
Royal BEAH	P3, T
Steel STAH	P3, T
Graphite GRAH	P3, T
Navy BNAH	P3, T
Cell BCAH	P3, T
Wine RWAH	P3, T
Hunter GHAH	P3, T †
Teal BTAH	P3, T †
Caribbean CBAH	P3, T
True Red TRAH	P3, T †
Sand SAAH	P3, T †

Black BKAH
Royal BEAH
Steel STAH
Graphite GRAH
True Navy TNAH

COLORS & STYLES	
P3	Up to P3X
T	Up to TXL
†	Select colors while supplies last.

Colors listed in order of popularity

F = Fashion color



A 9151 Urbane Ultimate Men's V-Neck Scrub Top

MODERN TAILORED FIT

- 54% Rayon/44% Polyester/2% Spandex
- Crossover banded v-neck
- Double-needle stitching throughout
- Chest pocket with pen division
- Two angled top-entry pockets
- Bungee loop on wearer's right
- Side vents for ease of movement

Sizes: SML-3XL
Center back length: 28½"

- Black BKAH
- Royal BEAH
- Steel STAH
- Graphite GRAH
- True Navy TNAH

B 9137AH Urbane Ultimate Men's V-Neck Scrub Top

MODERN TAILORED FIT

- 54 Rayon/44% Polyester/2% Spandex
- Crossover banded V-neck
- Bungee loop
- Side vents
- Back yoke detail
- Chest pocket with pen division
- Double-needle stitching

Sizes: SML-3XL
Medium length: 28½"

- Black BKAH
- Royal BEAH
- Steel STAH
- Graphite GRAH
- True Navy TNAH

C 9252 Urbane Ultimate Men's Straight-Leg Quick Cool Cargo Scrub Pants

MODERN TAILORED FIT

- 54% Rayon/44% Polyester/2% Spandex
- Full elastic waist
- Snap waistband closure
- Belt loops
- Full functioning fly
- Two angled hip pockets
- Cargo and accessory pocket with pen division on wearer's right
- Knee seams

Regular: SML-3XL (31¾" inseam)
Short: SSM-S3X (28½" inseam)
Tall: TSM-TXL (33¾" inseam)

- Black BKAH
- Royal BEAH
- Steel STAH
- Graphite GRAH
- True Navy TNAH

MEN'S STYLES

urbane
ULTIMATE

2-Way Stretch

Soft Rayon Fabric

Fade Resistant

Chemical-Free Wrinkle Resistance



D

D 9534 Urbane Essentials Women's Mock Wrap Neck Scrub Top

CLASSIC RELAXED FIT

- 65% Polyester/35% Cotton
- Two pockets
- Side vents

Sizes: XSM–3XL
Medium length: 27½"

Royal <small>BEP</small>	
Navy <small>BNP</small>	
Black <small>BKP</small>	
White <small>wwxy</small>	
Ceil <small>BCP</small>	
Steel <small>STP</small>	
Galaxy <small>BGP</small>	
Graphite <small>GRP</small>	
Navy/Ceil <small>BNBCP</small>	†
Caribbean/Aqua <small>CBAQP</small>	†
True Red/Black <small>TRBKP</small>	†
Ceil/Navy <small>BCBNP</small>	†
Steel/Pearl Pink <small>STPKP</small>	†
Royal/Lime <small>BELMP</small>	†
Strawberry/Lime <small>RELMP</small>	†



E

E 9502 Urbane Essentials Women's Straight-Leg Scrub Pants

CLASSIC RELAXED FIT

- 65% Polyester/35% Cotton
- One pocket
- Full drawstring

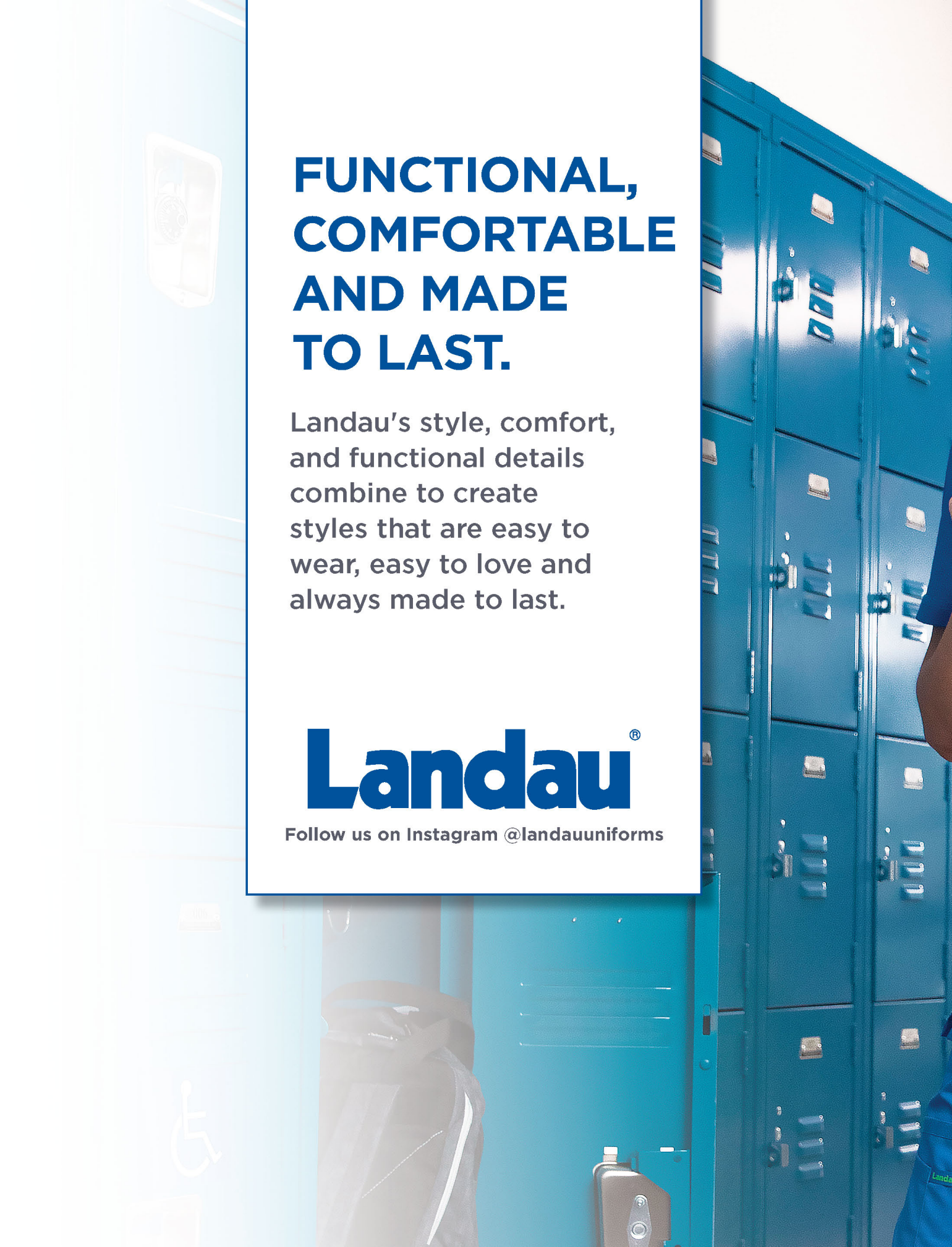
Regular: XSM–2XL (31½" inseam)*
Petite: PXS–P2X (28½" inseam)*
Tall: TXS–TXL (33½" inseam)*

Royal <small>BEP</small>	3X, P2, T*
Navy <small>BNP</small>	3X, P2, T*
Black <small>BKP</small>	3X, P2, T*
Ceil <small>BCP</small>	3X, P2, T*
Steel <small>STP</small>	3X, P2, T*
Wine <small>RWP</small>	3X, P2, T
Galaxy <small>BGP</small>	P2, T
Graphite <small>GRP</small>	3X, P3, T
Hunter <small>GHP</small>	P2, T, †
Caribbean <small>CBP</small>	P2, T
Olive <small>GOSP</small>	

*9502 PXXSM available in: Black, Ceil, Navy, Royal, Steel.

*9502 XXSM available in: Black, Caribbean, Carnation, Ceil, Galaxy, Navy, Patriot, Royal, Sandstone, Steel, White, Wine.

†Select colors while supplies last.



FUNCTIONAL, COMFORTABLE AND MADE TO LAST.

Landau's style, comfort,
and functional details
combine to create
styles that are easy to
wear, easy to love and
always made to last.

Landau[®]

Follow us on Instagram @landauuniforms



Landau

Landau®
ProFlex

STUDENT PROGRAM

OUR NEW STUDENT STYLES PAIR
PERFECTLY WITH PROFLEX PANTS



Landau®



AVAILABLE
FEBRUARY



A



B



A 4173PRV ProFlex Women's Zip-Front Student Tunic

MODERN TAILORED FIT

- 73% Polyester/25% Rayon/2% Spandex
- Modern collar
- ProFlex signature green detail in the back neck
- Zipper closure
- Five pockets
- ProFlex logo tape
- Scissor tape inside pocket
- Princess seams for shaping
- Back darts for added shape

Sizes: XSM-5XL
Medium Length: 28"

White WWPR

B 4263PRV ProFlex Men's Zip-Front Student Tunic

MODERN TAILORED FIT

- 73% Polyester/25% Rayon/2% Spandex
- Modern collar
- ProFlex signature green detail in the back neck
- Zipper closure
- Five hip pockets
- ProFlex logo tape
- Scissor tape inside pocket
- Back yoke

Sizes: XSM-5XL
Medium Length: 29½"

White WWPR

PERSONALIZE THE LOOK OF YOUR STUDENTS.

Get personal with our unique customization option. Add your choice of ribbon to identify your program year or area of study.



1
CHOOSE YOUR SLEEVE & COLLAR DETAIL



2
CHOOSE YOUR COLLAR DETAIL ONLY



3
CHOOSE YOUR SLEEVE DETAIL ONLY



A



A 4160 Landau ProFlex Women's V-Neck Scrub Top

MODERN TAILORED FIT

- 73% Polyester/25% Rayon/2% Spandex
- Stretch twill fabrication
- Three pockets
- Logo tape accessory loop
- Side vents
- Bust and back waist darts

Sizes: **XXS-5XL**
Medium length: 25⁵/₈"

Now offered in 1XL!



B



B 4161 Landau ProFlex Women's Mock Wrap Neck Scrub Top

MODERN TAILORED FIT

- 73% Polyester/25% Rayon/2% Spandex
- Stretch twill fabrication
- Three pockets
- Logo tape accessory loop
- Side vents
- Princess seams
- Back waist darts

Sizes: **XXS-5XL**
Medium length: 25³/₄"



C



C 3038 Landau ProFlex Women's Warm-Up Scrub Jacket

MODERN TAILORED FIT

- 73% Polyester/25% Rayon/2% Spandex
- Stretch twill fabrication
- Three pockets
- Logo tape accessory loop
- Side vents
- Bust darts
- Knit cuff
- Snap front

Sizes: **XSM-5XL**
Medium length: 29¹/₂"

Black BKPR
Royal BEPR
Cell BCPR
True Navy TNPR
Graphite GRPR
Wine RWPR
Galaxy BGPR
White WWPR
True Red TRPR
Steel STPR
Hunter GHPR
Teal BTPR
Caribbean CBPR
Grape RPPR
Sandstone SAPR
New Eggplant NEPR

Black BKPR
Royal BEPR
Cell BCPR
True Navy TNPR
Graphite GRPR
Wine RWPR
Galaxy BGPR
White WWPR
True Red TRPR
Steel STPR
Hunter GHPR
Teal BTPR
Caribbean CBPR
Grape RPPR
Sandstone SAPR
Primrose PRPR
New Eggplant NEPR

Black BKPR
Royal BEPR
Cell BCPR
True Navy TNPR
Graphite GRPR
Wine RWPR
Galaxy BGPR
White WWPR
True Red TRPR
Steel STPR
Hunter GHPR
Teal BTPR
Caribbean CBPR
Grape RPPR
Sandstone SAPR
Primrose PRPR
New Eggplant NEPR



D



E



F

D 4168 Landau ProFlex Women's V-Neck Scrub Top

MODERN TAILORED FIT

- 73% Polyester/25% Rayon/2% Spandex and 96% Polyester/4% Spandex
- Rib-knit neckline and side inserts
- Bust darts
- High - low hem
- Two angled top-entry pockets
- Logo tape accessory loop
- Double-needle topstitching detail
- Bungee loop and ID tab
- Scissor tape inside wearer's right pocket
- Signature green, back neck detail
- Side vents

Sizes: **XXS-5XL**
Medium length: 27"

- Black BKPR
- Royal BEPR
- Ceil BCPR
- True Navy TNPR
- Graphite GRPR
- NEW** Wine RWPR
- NEW** Galaxy BGPR

E 4172 Landau ProFlex Women's V-Neck Scrub Top

MODERN TAILORED FIT

- 73% Polyester/25% Rayon/2% Spandex with 96% Polyester/4% Spandex panels
- Textured knit-banded crossover v-neckline
- Bust darts for a feminine fit
- Angled top-entry pockets
- Double pockets
- Logo tape accessory loop
- Rib-knit sleeve and back inserts
- Rib-knit cuffs
- Locker loop on wearer's left shoulder
- Double-needle topstitching detail
- Scissor tape inside right pocket
- Side vents

Sizes: **XSM-3XL**
Medium length: 25 5/8"

- Black BKPR
- Royal BEPR
- Ceil BCPR
- True Navy TNPR
- Graphite GRPR
- White WWPR

F 4169 Landau ProFlex Women's V-Neck Scrub Top

MODERN TAILORED FIT

- 73% Polyester/25% Rayon/2% Spandex
- Curved v-neck with self inset
- Angled seams
- Two top-entry pockets
- Bungee badge loop
- Instrument division and scissor tape
- Side vents
- Back darts for shaping

Sizes: **XXS-2XL**
Medium length: 26 1/8"

- Black BKPR †
- Royal BEPR †
- True Navy TNPR †
- Graphite GRPR †

Landau
ProFlex

Landau ProFlex



Chemical-free wrinkle resistance



Two-way stretch fabric for comfort and movement



Fade resistant

A 2043 Landau ProFlex Women's Straight-Leg Yoga Scrub Pants

MODERN TAILORED FIT

- 73% Polyester/25% Rayon/2% Spandex
- Stretch twill fabrication
- Four pockets
- Logo tape accessory loop
- Side vents
- Flat elastic knit waistband
- Internal drawstring

Regular: XXS-5XL (31½" inseam)
 Petite: PXS-P2X (28½" inseam)
 Tall: TXS-TXL (33½" inseam)

B 2042 Landau ProFlex Women's Straight-Leg Cargo Scrub Pants

MODERN TAILORED FIT

- 73% Polyester/25% Rayon/2% Spandex
- Stretch twill fabrication
- Five pockets
- Logo tape accessory loop
- Side vents
- 50/50 Waistband elastic back, flat front
- Front drawstring

Regular: XXS-5XL (31½" inseam)
 Petite: PXS-P2X (28½" inseam)
 Tall: TXS-TXL (33½" inseam)

Now offered in 1XL!

COLORS & STYLES

P2	Up to P2X
T	Up to TXL

Colors listed in order of popularity

- Black BKPR
- Royal BEPR
- Ceil BCPR
- Graphite GRPR
- True Navy TNPR
- White WWPR
- Steel STPR
- Wine RWPR
- Teal BTPR
- Galaxy BGPR
- Hunter GHPR
- Caribbean CBPR
- True Red TRPR
- Grape RPPR
- Sandstone SAPR
- New Eggplant NEPR
- Primrose PRPR

- Black BKPR
- Royal BEPR
- Ceil BCPR
- Graphite GRPR
- True Navy TNPR
- White WWPR
- Steel STPR
- Wine RWPR
- Teal BTPR
- Galaxy BGPR
- Hunter GHPR
- Caribbean CBPR
- True Red TRPR
- Grape RPPR
- Sandstone SAPR
- New Eggplant NEPR



Landau



C

C 2030PRV Landau ProFlex Women's Banded-Bottom Jogger Scrub Pants

MODERN TAILORED FIT

- 73% Polyester/25% Rayon/2% Spandex
- Rib-knit elastic waistband with internal signature green drawcord
- Two hip pockets
- Two back pockets
- Two cargo pockets with additional layered pocket
- Signature ProFlex instrument tape
- Rib-knit cuff

Regular: XSM-2XL (29" inseam)
Petite: PXS-P2X (26½" inseam)



D

D 2044 Landau ProFlex Women's Tapered-Leg Cargo Scrub Pants

MODERN TAILORED FIT

- 73% Polyester/25% Rayon/2% Spandex
- Elastic waistband with internal drawcord
- Two hip pockets
- Cargo pockets on each side
- Single back pocket
- Double-needle topstitching detail
- Side vents

Regular: XXS-5XL (30½" inseam)
Petite: PXS-P2X (28" inseam)
Tall: TXS-TXL (32½" inseam)



E

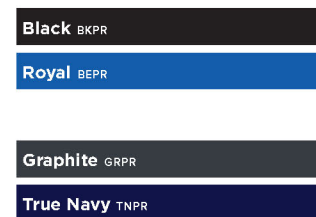
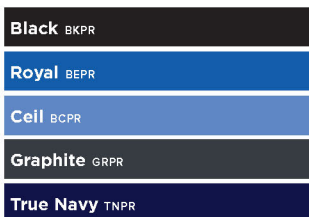
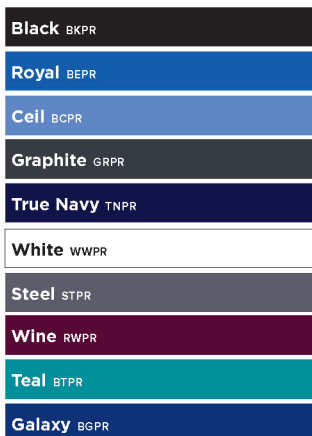


E 2045 Landau ProFlex Women's Straight-Leg Cargo Scrub Pants

MODERN TAILORED FIT

- 73% Polyester/25% Rayon/2% Spandex
- PWRcor™ waistband with 2 layers of power mesh
- Internal drawcord for extra security
- Cargo pockets on either side
- Double cargo with accessory pocket
- Side vents
- Back pocket

Regular: XXS-2XL (31" inseam)
Petite: PXS-P2X (28½" inseam)
Tall: TXS-TXL (33" inseam)





Tuck or Show drawcord

A



Cargo pocket detail



A 2104 ProFlex Unisex Pant with Cargo Pockets

MODERN TAILORED FIT

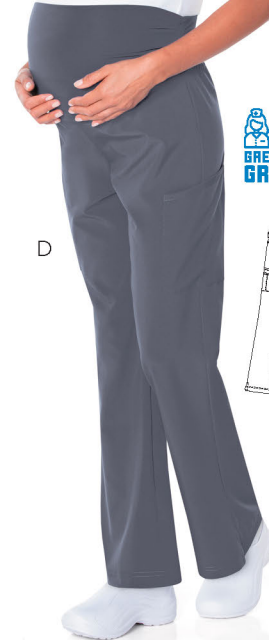
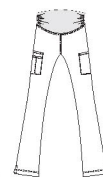
- 73% Polyester/25% Rayon/2% Spandex
- ProFlex signature green internal drawcord
- Two hip pockets
- One back pocket
- Two cargo pockets with an additional pocket and logo tab
- Side vents

Regular: XSM-5XL (30" inseam)

Short: SSM-S3X (27½" inseam)

Tall: TSM-TXL (32" inseam)

- Black** BKPR
- Royal** BEPR
- Cell** BCPR
- Steel** STPR
- True Navy** TNPR
- Graphite** GRPR
- Wine** RWPR



D

D 2399 Landau ProFlex Women's Flare-Leg Scrub Pants

MODERN TAILORED FIT

- 73% Polyester/25% Rayon/2% Spandex
- Stretch twill fabrication
- Three pockets
- Logo tape accessory loop
- Side vents

Sizes: XSM-XLG (30" inseam)



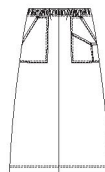
C

C 4399 Landau ProFlex Women's V-Neck Scrub Top

MODERN TAILORED FIT

- 73% Polyester/25% Rayon/2% Spandex
- Stretch twill fabrication
- Three pockets
- Logo tape accessory loop

Sizes: XSM-XLG
Medium Length: 31½"



B

B 2227 Landau ProFlex Women's A-Line Scrub Skirt

MODERN TAILORED FIT

- 73% Polyester/25% Rayon/2% Spandex
- Stretch twill fabrication
- Soil release
- Three pockets
- Logo tape accessory loop
- Center back vent
- Full elastic waistband

Sizes: XSM-5XL
Medium Length: 31⅞"

Black BKPR
Royal BEPR
Cell BCPR
Steel STPR
True Navy TNPR
White WWPR

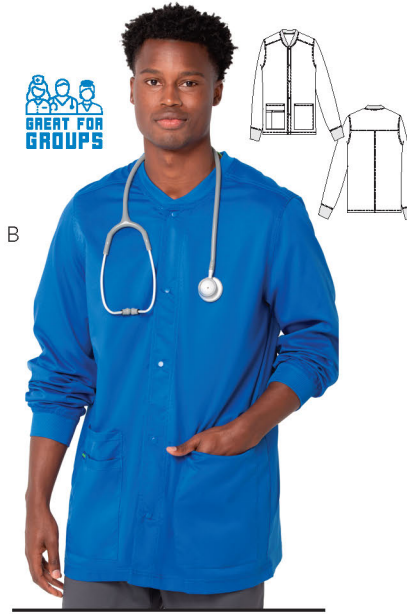
Black BKPR
Royal BEPR
Cell BCPR
Steel STPR
True Navy TNPR

Black BKPR
Royal BEPR
Cell BCPR
Steel STPR
True Navy TNPR

ProFlex

You'll definitely take comfort in the marvelous stretchability of this amazing fabric! Need more convincing? It's also wrinkle and fade resistant.





A 4253 Landau ProFlex Men's V-Neck Scrub Top

MODERN TAILORED FIT

- 73% Polyester/25% Rayon/2% Spandex
- Stretch twill fabrication
- Four pockets
- Side vents
- Logo tape accessory loop

Sizes: SML-5XL
Medium Length: 28"

B 3170 Landau ProFlex Men's Warm-Up Scrub Jacket

MODERN TAILORED FIT

- 73% Polyester/25% Rayon/2% Spandex
- Stretch twill fabrication
- Three pockets
- Knit cuff
- Snap front

Sizes: SML-5XL
Medium Length: 31 1/2"

C 4259 Landau ProFlex Men's V-Neck Scrub Top

MODERN TAILORED FIT

- 73% Poly/ 25% Rayon/ 2% Spandex
- Banded V-neck
- Double-needle topstitching throughout
- Chest pocket with additional accessory pocket
- Side vents
- Back yoke

Sizes: SML-5XL
Medium Length: 28"

Black BKPR
White WWPR
Royal BEPR
Cell BCPR
Steel STPR
True Navy TNPR
Graphite GRPR
Wine RWPR
Teal BTPR
Galaxy BGPR
Hunter GHPR
Caribbean CBPR
True Red TRPR
New Eggplant NEPR
Grape RPPR
Sandstone SAPR

Black BKPR
White WWPR
Royal BEPR
Cell BCPR
Steel STPR
True Navy TNPR
Graphite GRPR
Wine RWPR
Teal BTPR
Galaxy BGPR
Hunter GHPR
Caribbean CBPR
True Red TRPR
New Eggplant NEPR

Black BKPR
White WWPR
Royal BEPR
Cell BCPR
Steel STPR
True Navy TNPR
Graphite GRPR
Wine RWPR
Teal BTPR
Galaxy BGPR
Hunter GHPR
Caribbean CBPR
True Red TRPR
New Eggplant NEPR
Grape RPPR
Sandstone SAPR

Landau
ProFlex



D

D 3043 Landau ProFlex Men's 5-Pocket Stretch Lab Coat

MODERN TAILORED FIT

- 95% Polyester/5% Spandex
- Chest pocket
- Two top-entry pockets with accessory tape
- Two additional pockets
- Side hand access
- Button closure
- ProFlex signature green detail in the back neck
- Locker loop
- Back belt
- Back vent

Sizes: MED-2XL
Length: 33¾ (Size MED)

White WWPR

MEN'S STYLES



E

E 2100PRV Landau ProFlex Men's Banded-Bottom Jogger Scrub Pants

MODERN TAILORED FIT

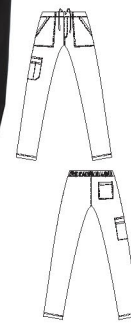
- 73% Polyester/25% Rayon/2% Spandex
- Rib-knit elastic waistband with internal signature green drawcord
- Functional zipper fly
- Two hip pockets
- Two back pockets
- Two cargo pockets with an additional layered pocket
- Signature ProFlex instrument tape
- Rib-knit cuff

Regular: SML-2XL (30" inseam)
Short: SSM-S2X (27½" inseam)
Tall: TXS-TXL (32" inseam)

Black BKPR
Royal BEPR
Cell BCPR
Steel STPR
True Navy TNPR
Graphite GRPR
Wine RWPR
Teal BTPR
Galaxy BGPR

COLORS & STYLES	
T	Up to TXL
S3	Up to S3X

Colors listed in order of popularity



F

F 2103 Landau ProFlex Men's Straight-Leg Cargo Scrub Pants

MODERN TAILORED FIT

- 73% Polyester/25% Rayon/2% Spandex
- Stretch twill fabrication
- Pockets, including doubled cargo
- Logo tape accessory loop
- 50/50 Waistband elastic back, flat front
- Internal drawstring

Regular: SML-5XL (31½" inseam)
Short: SSM-S3X (28½" inseam)
Tall: TSM-TXL (33½" inseam)

Black BKPR
White WWPR
Royal BEPR
Cell BCPR
Steel STPR
True Navy TNPR
Graphite GRPR
Wine RWPR
Teal BTPR
Galaxy BGPR
Hunter GHPR
Caribbean CBPR
True Red TRPR
New Eggplant NEPR
Grape RPPR
Sandstone SAPR



A

A 8219 Landau Essentials Women's V-Neck Scrub Top

CLASSIC RELAXED FIT

- 65% Polyester/35% Cotton
- Instrument pocket
- Four pockets
- Side vents

Sizes: XSM-5XL
Medium length: 26 7/8"



B

B 8111 Landau Essentials Women's V-Neck Scrub Top

MODERN TAILORED FIT

- 65% Polyester/35% Cotton Brushed Poplin
- Banded V-neck
- Double-needle topstitching throughout
- Double top-entry pockets
- Instrument pocket
- Additional accessory pocket
- Side vents
- Bust and back darts

XXS-5XL
Medium length: 25 1/2"



C

C 7525 Landau Essentials Women's Warm-Up Scrub Jacket

CLASSIC RELAXED FIT

- 65% Polyester/35% Cotton
- Instrument pocket
- Four pockets
- Knit cuffs

Sizes: XSM-5XL
Medium length: 29"

- Black BKP
- Navy BNP
- White WWP
- Royal BEP
- Ceil BCP
- Steel STP
- Wine RWP
- Hunter GHP
- True Navy TNP
- Teal BTP
- Caribbean CBP
- Galaxy BGP
- Sandstone SAP
- Graphite GRP
- Grape RPP
- True Red TRP
- Patriot BPP †
- Wisteria WPP †
- Nautical NAUTL †

- Black BKP
- Navy BNP
- Royal BEP
- Ceil BCP
- Steel STP
- Wine RWP
- Hunter GHP
- Teal BTP
- Caribbean CBP
- Graphite GRP

- Black BKP
- Navy BNP
- White WWP
- Royal BEP
- Ceil BCP
- Steel STP
- Wine RWP
- Hunter GHP
- Teal BTP
- Caribbean CBP
- Galaxy BGP
- Sandstone SAP
- Grape RPP
- True Red TRP



D

D 8232 Landau Essentials Women's V-Neck Scrub Top

CLASSIC RELAXED FIT

- 65% Polyester/35% Cotton
- Side vents
- Four pockets
- Button-snap front closure
- Instrument pocket

Sizes: XSM-5XL
Medium length: 27 3/4"



E

E 7535 Landau Essentials Women's Warm-Up Scrub Jacket

CLASSIC RELAXED FIT

- 65% Polyester/35% Cotton
- Five pockets
- Knit cuffs
- Button front closure

Sizes: SML-5XL
(XSM available in White and Navy)
Medium length: 29 1/2"

Black <small>BKP</small>
Navy <small>BNP</small>
White <small>WWP</small>
Royal <small>BEP</small>
Ceil <small>BCP</small>
Steel <small>STP</small>

Black <small>BKP</small>	
Navy <small>BNP</small>	XSM
White <small>WWY</small>	XSM
Royal <small>BEP</small>	

True Navy <small>TNP</small>	†
Teal <small>BTP</small>	

Galaxy <small>BGP</small>

True Red <small>TRP</small>	†
-----------------------------	---

Wisteria <small>WPP</small>	†
-----------------------------	---



A 8327 Landau Essentials Women's Straight-Leg Scrub Pants

- CLASSIC RELAXED FIT**
- 65% Polyester/35% Cotton
- Two pockets
- Full elastic waist

Regular: XSM–5XL (31" inseam)
 Petite: PXS–P3X (28½" inseam)
 Tall: TXS–T3X (33" inseam)

Black BKP	P3, T3
Navy BNP	P3, T
White WWP	P3, T3
Royal BEP	P3, T3
Cell BCP	P3, T
Steel STP	P3, T3
Wine RWP	P3, T3
Hunter GHP	P3
True Navy TNP	P3
Teal BTP	P3
Caribbean CBP	P3
Galaxy BGP	P3
Sandstone SAP	P3, T
Grape RPP	P3
Graphite GRP	



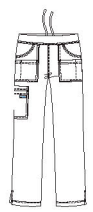
B 8320 Landau Essentials Women's Tapered-Leg Scrub Pants

- CLASSIC RELAXED FIT**
- 65% Polyester/35% Cotton
- Two pockets
- Full elastic waistband

Regular: XSM–5XL (31" inseam)
 Petite: PSX–P3X (28½" inseam)
 Tall: TXS–T3X (33" inseam)

Black BKP	P3, T3
Navy BNP	P3, T3
White WWY	P3, T3
Royal BEP	P3, T3
Cell BCP	P3, T3
Steel STP	P3, T3
Wine RWP	P3, T3
Hunter GHP	P3, T3
True Navy TNP	P3, T3
Teal BTP	P3, T3
Caribbean CBP	P3, T3
Galaxy BGP	P3, T3
Sandstone SAP	P3, T3
Grape RPP	P3, T3

True Red TRP	P3, T3
Olive GOSP	P3, T3, †
Cocoa COCP	P3, T3, †
Wisteria WPP	P3, T3, †



C 8380 Landau Essentials Women's Straight-Leg Cargo Scrub Pants

- MODERN TAILORED FIT**
- 65% Polyester/35% Cotton Brushed Poplin
- Drawstring front, elastic back
- Two hip pockets
- Additional accessory pockets and instrument division
- Double cargo
- Side vents
- Back pocket

Regular: XXS–5XL (31½" inseam)
 Petite: PXS–P2X (28½" inseam)
 Tall: TXS–TXL (33½" inseam)

Black BKP	
Navy BNP	
Royal BEP	
Cell BCP	
Steel STP	
Wine RWP	
Hunter GHP	
Teal BTP	
Caribbean CBP	
Graphite GRP	



D



E



F

D 8385 Landau Essentials Women's Straight-Leg Cargo Scrub Pants

CLASSIC RELAXED FIT

- 65% Polyester/35% Cotton
- Five pockets
- Side vents
- Elastic back waist
- Front drawstring

Regular: XSM–2XL (31½" inseam)
 Petite: PXS–P2X (28½" inseam)
 Tall: TXS–T2X (33½" inseam)

Black <small>BKP</small>	P2, T2
Navy <small>BNP</small>	P2, T2
Royal <small>BEP</small>	P2, T2
Cell <small>BCP</small>	P2, T2
Steel <small>STP</small>	P2

E 8335 Landau Essentials Women's Flare-Leg Scrub Pants

CLASSIC RELAXED FIT

- 65% Polyester/35% Cotton
- Two pockets
- Elastic back waist
- Front drawstring

Regular: XSM–2XL (31" inseam)
 Petite: PSX–P2X (28½" inseam)
 Tall: TXS–TXL (33" inseam)

Black <small>BKP</small>	P2, T
Navy <small>BNP</small>	P2, T
White <small>WWP</small>	P2, T
Royal <small>BEP</small>	P2, T
Cell <small>BCP</small>	P2, T
Steel <small>STP</small>	P2, T
Wine <small>RWP</small>	P2, T
Hunter <small>GHP</small>	P2, T
True Navy <small>TNP</small>	P2, T, †
Teal <small>BTP</small>	P2, T

Sandstone <small>SAP</small>	P2, T, †
------------------------------	----------

Cocoa <small>COC</small>	P2, T, †
--------------------------	----------

F 8501 Landau Essentials Women's Tapered-Leg Scrub Pants

CLASSIC RELAXED FIT

- 65% Polyester/35% Cotton
- Four pockets
- Full elastic waist
- Internal drawstring

Regular: XSM–3XL (31" inseam)
 Petite: PSX–P3X (28½" inseam)

Black <small>BKP</small>	P2 †
Navy <small>BNP</small>	P3 †
Royal <small>BEP</small>	P3 †

Landau
ESSENTIALS

COLORS & STYLES	
P2	Up to P2X
P3	Up to P3X
T	Up to TXL
T2	Up to T2X
T3	Up to T3X
†	Select colors while supplies last.

Colors listed in order of popularity

Landau[®] ESSENTIALS



A

B

A 2028 Landau Essentials Women's Flare-Leg Cargo Scrub Pants

CLASSIC RELAXED FIT

- 65% Polyester/35% Cotton
- Four pockets
- Instrument pocket
- Side vents
- Elastic-back waist
- Drawstring front

Regular: XSM–5XL (31" inseam)
 Petite: PXS–P3X (28 1/2" inseam)
 Tall: TXS–T2X (33" inseam)

Black _{BKP}	P3, T2 †
Navy _{BNP}	P3, T2 †
Royal _{BEP}	P3, T2 †
Ceil _{BCP}	P3, T2, †
Wine _{RWP}	P3, T2 †
Hunter _{GHP}	P3, T2, †

B 50001 Landau Essentials Women's Long-Sleeve Tee

MODERN TAILORED FIT

- 95% Cotton/5% Spandex

Sizes: XXS–2XL
 Medium length: 26 1/2"

Black	
Navy	†
White	
Royal	†
Ceil	†
Steel	†

COLORS & STYLES

XSM	X Small
†	Select colors while supplies last.

Colors listed in order of popularity



C



C 7502 Landau Essentials Unisex V-Neck Scrub Top

CLASSIC RELAXED FIT

- 65% Polyester/35% Cotton
- One pocket
- Reversible

Regular: XSM–5XL (27½" length)
Tall: TSM–T2X (30" length)

Black BKP
Navy BNP
White WWP
Royal BEP
Ceil BCP
Steel STP
Wine RWP
Hunter GHP
Teal BTP
Caribbean CBP
Galaxy BGP
Sandstone SAP
Graphite GRP
Grape RPP
True Navy TNP
True Red TRP
Patriot BPP †
Wisteria WPP †



D



D 7602 Landau Essentials Unisex Straight-Leg Scrub Pants

CLASSIC RELAXED FIT

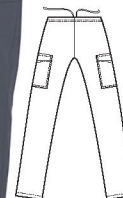
- 65% Polyester/35% Cotton
- One pocket
- Full drawstring waist
- Reversible

Regular: XSM–5XL (31½" inseam)
Petite: PXS–P3X (28½" inseam)
Tall: TSM–T2X (34½" inseam)

Black BKP	P3, T2
Navy BNP	P3, T2
White WWP	P3, T2
Royal BEP	P3, T2
Ceil BCP	P3, T2
Steel STP	
Wine RWP	P3, T2
Hunter GHP	P3, T2
Teal BTP	
Caribbean CBP	
Galaxy BGP	
Sandstone SAP	P3, T2
Graphite GRP	P3, T2
Grape RPP	P3, T2
True Navy TNP	P3, T2
True Red TRP	
Patriot BPP †	†
Wisteria WPP †	†



E



E 2029 Landau Essentials Unisex Tapered-Leg Cargo Scrub Pants

MODERN TAILORED FIT

- 65% Polyester/35% Cotton
- Five pockets
- Full drawstring waist

Regular: XSM–5XL (31" inseam)
Petite: PXS–P3X (28½" inseam)
Tall: TXS–T2X (33" inseam)

Black BKP	P3, T2, †
Navy BNP	P3, T2, †
Wine RWP	P3, T2, †

UNISEX
STYLES

Landau[®] FOR MEN



A



B

A 4098 Landau Essentials Men's V-Neck Scrub Top

MODERN TAILORED FIT

- 52% Cotton/45% Polyester/3% Spandex
- Stretch twill fabrication
- One pocket
- Instrument pocket
- Bungee loop
- Side vents

Sizes: SML-5XL
Medium length: 30 1/4"

- Black BKCH
- Navy BNCH
- Royal BECH
- Cell BCCH
- Steel STCH

B 7489 Landau Essentials Men's V-Neck Scrub Top

CLASSIC RELAXED FIT

- 65% Polyester/35% Cotton
- Five pockets

Regular: SML-5XL (30 1/2" length)
Tall: TSM-T2X (32 1/2" length)

- Black BKP
- Navy BNP
- White WWP
- Royal BEP
- Cell BCP
- Steel STP
- Wine RWP
- True Navy TNP
- Hunter GHP †

Sandstone SAP †

COLORS & STYLES	
T2	Up to T2X
†	Select colors while supplies last.

Colors listed in order of popularity



C 7594 Landau Essentials Men's V-Neck Scrub Top

CLASSIC RELAXED FIT

- 65% Polyester/35% Cotton
- One pocket
- Pen loops

Sizes: SML-5XL
Medium length: 30"

Black BKP



Steel STP



D 7551 Landau Essentials Men's Warm-Up Scrub Jacket

CLASSIC RELAXED FIT

- 65% Polyester/35% Cotton
- Five pockets
- Knit cuff
- Snap-front closure

Sizes: SML-5XL
Medium length: 31½"

Black BKP

Navy BNP

White wwvc

Royal BEP

Ceil BCP

Steel STP

Wine RWP

True Navy TNP

Hunter GHP

Teal BTP

Caribbean CBP

Graphite GRP

Grape RPP

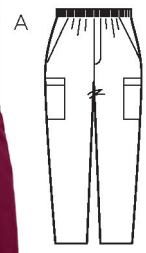
True Red TRP



Landau[®]
FOR MEN

MEN'S
STYLES

Landau® FOR MEN



COLORS & STYLES	
P2	Up to P2X
P3	Up to P3X
T	Up to TXL
T2	Up to T2X
T3	Up to T3X
S2	Up to S2X
S3	Up to S3X
L	Up to LXL
L2	Up to L2X
XXS	XX Small
SSM	Short Small
3X	Up to 3XL
†	Select colors while supplies last.

Colors listed in order of popularity

A 8555 Landau Essentials Men's Straight-Leg Cargo Scrub Pants

- CLASSIC RELAXED FIT**
- 65% Polyester/35% Cotton
- Seven pockets
- Elastic waistband
- Internal drawstring
- Zipper fly

Regular: SML–5XL (31" inseam)
Short: SSM–S3X (28½" inseam)
Tall: TMD–T3X (33½" inseam)

Black BKP	T3, S3
Navy BNP	T3, S3
Royal BEP	T3
Ceil BCP	T3
Steel STP	T3, S3
White wwvc	T3
Wine RWP	T3
True Navy TNP	T3, S3
Hunter GHP	T3
Teal BTP	T3
Caribbean CBP	T3
Galaxy BGP	
Sandstone SAP	T3
Graphite GRP	T3, S3
True Red TRP	T3, S3
Grape RPP	T3, S3

B 8550 Landau Essentials Men's Straight-Leg Scrub Pants

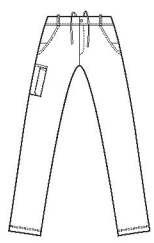
- CLASSIC RELAXED FIT**
- 65% Polyester/35% Cotton
- Three pockets
- Full elastic waist
- Full internal drawstring
- Zipper fly

Sizes: SML–5XL (31" inseam)
Short: SSM–S3X (28½" inseam)
Tall: TSM–TXL (33½" inseam)

Black BKP	T, S3 †
Navy BNP	T, S3 †
Ceil BCP	†



C



C 2037 Landau Essentials Men's Straight-Leg Cargo Scrub Pants

CLASSIC RELAXED FIT

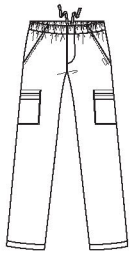
- 95% Polyester/5% Spandex
- Four-way stretch
- Moisture wicking
- Four pockets
- Instrument pocket
- Elastic back waist
- Front drawstring
- Functional fly

Regular: SML–3XL (31½" inseam)
 Short: SSM–S3X (28½" inseam)
 Tall: TSM–TXL (34" inseam)

Black BKFS	T, S3, †
Navy BNFS	T, S3, †
Royal BEFS	T, S3, †
Steel STFS	T, S3, †



D



D 2012 Landau Essentials Men's Straight-Leg Cargo Scrub Pants

MODERN TAILORED FIT

- 52% Cotton/45% Polyester/3% Spandex
- Stretch twill fabrication
- Seven pockets
- Elastic waistband
- Internal drawstring
- Zipper fly

Regular: SML–5XL (31½" inseam)
 Tall: TSM–TXL (33½" inseam)

Black BKCH	T3
Navy BNCH	T3
Royal BECH	T3
Ceil BCCH	T3
Steel STCH	T3

Landau[®]
 FOR MEN

MEN'S
 STYLES



A



B



COLORS & STYLES	
P2	Up to P2X
P3	Up to P3X
T2	Up to T2X
T3	Up to T3X
XXS	XX Small
PXX	Petite XX Small
†	Select colors while supplies last.

Colors listed in order of popularity

A 70221 Landau Scrub Zone Women's V-Neck Scrub Top

CLASSIC RELAXED FIT

- 65% Polyester/35% Cotton
- Three pockets
- Side vents

Sizes: **XXS-5XL**
 Medium length: **27 3/8"**
 Select colors in **XXS***

Black	XXS
Navy	XXS
Royal	XXS
Cell	XXS
Grey	XXS
True Navy	XXS
Sand	
Graphite	
Wine	XXS
Hunter	
Teal	
Caribbean	
Cobalt	
Grape	
Red	
White	

B 70224 Landau Scrub Zone Women's Mock Wrap Neck Scrub Top

CLASSIC RELAXED FIT

- 65% Polyester/35% Cotton
- Two pockets
- Side vents
- Back waist darts

Sizes: **XSM-5XL**
 Medium length: **26"**

Black	†
Navy	†
Cell	†
Grey	†
True Navy	†



C

C 70223 Landau Scrub Zone Women's Notch Neckline Scrub Top

MODERN TAILORED FIT

- 65% Polyester/35% Cotton
- Two pockets
- Snap-front closure
- Side vents
- Front and back princess seams

Sizes: XSM-5XL
Medium length: 27"

Navy	†
Royal	†

Sand	†
------	---



D

D 70228 Landau Scrub Zone Women's Mock Wrap Neck Scrub Top

MODERN TAILORED FIT

- 65% Polyester/35% Cotton
- Surplice neckline
- Princess seams
- Two top-entry pockets
- Scissor tape inside pocket
- Side vents
- Back darts

Sizes: XXS-5XL
Medium length: 25"

Black
Navy
Royal
Ceil
Grey

Graphite
Wine
Hunter
Teal



E

E 83223 Landau Scrub Zone Women's Straight-Leg Cargo Scrub Pants

MODERN TAILORED FIT

- 65% Polyester/35% Cotton
- Drawstring front, elastic back
- Self-fabric drawstring
- Two roomy, angled hip pockets
- Large cargo pockets on both sides
- Side vents
- Back pocket

Regular: XXS-5XL (31½" inseam)
Petite: PXS-P2X (29" inseam)
Tall: TXS-TXL (33½" inseam)

Black
Navy
Royal
Ceil
Grey

Graphite
Wine
Hunter
Teal



COLORS & STYLES	
P2	Up to P2X
P3	Up to P3X
T2	Up to T2X
T3	Up to T3X
XXS	XX Small
PXX	Petite XX Small
†	Select colors while supplies last.

Colors listed in order of popularity

A 83222 Landau Scrub Zone Women's Flare-Leg Scrub Pants

CLASSIC RELAXED FIT

- 65% Polyester/35% Cotton
- Three pockets
- Side vents
- Elastic-back waistband
- Drawstring front

Regular: **XXS–5XL** (31" inseam)
 Petite: **PXXS–P2X** (28½" inseam)
 Tall: **TXS–T2X** (33" inseam)

Black	PXX, P2, T2 †
Navy	PXX, P2, T2 †
White	P2, T2 †
Royal	PXX, P2, T2 †
Grey	PXX, P2, T2 †
Wine	PXX, P2, T2 †
Hunter	P2, T2 †
Teal	P2, T2 †
True Navy	XXS, PXX, P2, T2 †
Sand	P2, T2 †
Graphite	P2, T2, †
Robins Egg	†
Orchid	P2, T2, †
Pink	†
Brown	P2, T2, †

B 83221 Landau Scrub Zone Women's Straight-Leg Cargo Scrub Pants

CLASSIC RELAXED FIT

- 65% Polyester/35% Cotton
- Three pockets
- Full elastic waistband

Regular: **XXS–5XL** (31" inseam)
 Petite: **PXS–P3X** (28½" inseam)
 Tall: **TXS–T3X** (33" inseam)

Black	PXX, P3, T2
Navy	PXX, P3, T2
White	P3, T2
Royal	PXX, P3, T2
Cell	PXX, P3, T2
Grey	PXX, P3, T2
Wine	PXX, P3, T2
Hunter	P3, T2
Teal	
True Navy	PXX, P3, T2
Sand	
Graphite	P3, T2
Robins Egg	†
Orchid	P2, T2, †
Caribbean	
Cobalt	
Grape	
Pink	†
Red	†
Brown	P2, T2, †



C

C 85221 Landau Scrub Zone Unisex Straight-Leg Cargo Scrub Pants

CLASSIC RELAXED FIT

65% Polyester/35% Cotton

Two pockets

Full drawstring waist

Regular: XSM-5XL (31" inseam)

Petite: PXS-P3X (28½" inseam)

Tall: TSM-T2X (33" inseam)

Black	PXX, P3, T2
Navy	PXX, P3, T2
White	P3, T2
Royal	PXX, P3, T2
Cell	PXX, P3, T2
Grey	PXX, P3, T2
Wine	PXX, P3, T2
Hunter	P3, T2
Teal	
True Navy	PXX, P3, T2
Sand	
Graphite	P3, T2
Robins Egg	†
Orchid	P2, T2, †
Caribbean	
Cobalt	
Grape	
Pink	
Red	†
Nautical	P3, T2, †
Island	†



D



D 71221 Landau Scrub Zone Unisex V-Neck Scrub Top

CLASSIC RELAXED FIT

65% Polyester/35% Cotton

One pocket with pen division

Regular: XSM-5XL

Medium length: 27½"

Black	PXX, P3, T2
Navy	PXX, P3, T2
White	P3, T2
Royal	PXX, P3, T2
Cell	PXX, P3, T2
Grey	PXX, P3, T2
Wine	PXX, P3, T2
Hunter	P3, T2
Teal	
True Navy	PXX, P3, T2
Sand	
Graphite	P3, T2
Robins Egg	†
Orchid	P2, T2, †
Caribbean	
Cobalt	
Grape	
Red	†
Nautical	P3, T2, †
Island	†

UNISEX STYLES



A



A 75221 Landau Scrub Zone Women's Warm-Up Scrub Jacket

MODERN TAILORED FIT

- 65% Polyester/35% Cotton
- Three pockets
- Snap-front closure

Sizes: XSM-5XL
Medium length: 27¾"

Black
Navy
White
Royal
Cell
Grey
Teal
Wine
Hunter
Caribbean
Graphite
True Navy



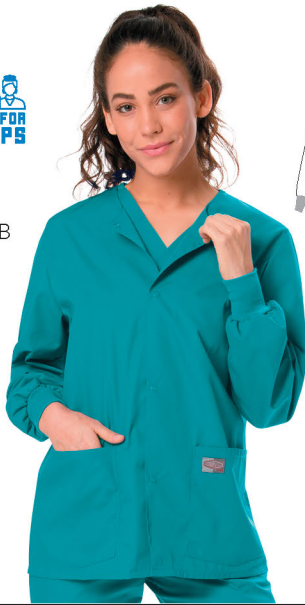
**Industrial Laundry
 Approved**



Lightweight Fabric



B



B 75231 Landau Scrub Zone Unisex Warm-Up Scrub Jacket

CLASSIC RELAXED FIT

- 65% Polyester/35% Cotton
- Crew neckline
- Snap front closure
- Knit cuffs
- Two top-entry pockets
- Wearer's right has an additional accessory pocket

Sizes: XSM-5XL

Medium length: 28"

Black

Navy

Royal

Cell

Grey

Teal

C



C 70227 Landau Scrub Zone Women's Warm-Up Scrub Jacket

CLASSIC RELAXED FIT

- 65% Polyester/35% Cotton
- Snap front jacket
- Two top-entry pockets
- Instrument pocket with scissor tape
- Knit cuffs ensure sleeves stay put when pushed up

Sizes: XSM-5XL

Medium length: 28"

Black

Navy

Royal

Cell

Grey

Teal

Wine

Hunter

Graphite

all day
by Landau



† White Supplies Last



A 4143 Landau All Day Women's Y-Neck Scrub Top

MODERN TAILORED FIT

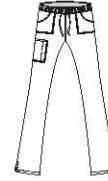
- 65% Polyester/35% Cotton
- Mechanical stretch
- Two pockets
- Left instrument pocket
- Side vents
- Princess seams

Sizes: XSM-5XL
Medium length: 28"

COLORS & STYLES	
P2	Up to P2X
P3	Up to P3X
T	Up to TXL
T2	Up to T2X
†	Select colors while supplies last.

Colors listed in order of popularity

Navy BNMST	†
Royal BEMST	†
Hunter GHMST	†
Teal BTMST	†
Galaxy BGMST	†
Wine RWMST	†
True Navy TNMST	†



† White Supplies Last



B 2035 Landau All Day Women's Flare-Leg Cargo Scrub Pants

MODERN TAILORED FIT

- 65% Polyester/35% Cotton
- Mechanical stretch
- Three pockets
- Instrument pocket
- Side vents
- Full elastic waist
- Silicone drawstring

Regular: XSM-5XL (31" inseam)
Petite: PXS-P2X (28½" inseam)
Tall: TXS-TXL (33" inseam)

Navy BNMST	P2, T, †
Royal BEMST	P2, T, †
Hunter GHMST	P2, T, †
Teal BTMST	P2, T, †
Galaxy BGMST	P2, T, †
White WWMST	P2, T, †
Cell BCMST	P2, T, †



† While Supplies Last



† While Supplies Last

C 4139 Landau All Day Unisex V-Neck Scrub Top

MODERN TAILORED FIT

- 65% Polyester/35% Cotton
- Mechanical stretch
- One pocket
- Instrument pocket
- Side vents

Regular: XSM–5XL
Medium length 28½"

D 2032 Landau All Day Unisex Straight-Leg Cargo Scrub Pants

MODERN TAILORED FIT

- 65% Polyester/35% Cotton
- Two pockets
- Instrument pocket
- Internal drawstring

Regular: XSM–5XL (30¾" inseam)
Petite: PXS–P3X (28¼" inseam)
Tall: TXS–T2X (32¾" inseam)

Black BKMST	†
Navy BNMST	†
Royal BEMST	†
Hunter GHMST	†
Teal BTMST	†
Galaxy BGMST	†
White WWMST	†
Cell BCMST	†
Wine RWMST	†
True Navy TNMST	†
Steel STMST	†
Grape RPMST	†
True Red TRMST	†
Graphite GRMST	†
Sea Mist MIMST	†

Black BKMST	P3, T2, †
Navy BNMST	P2, T2, †
Royal BEMST	P3, T2, †
Hunter GHMST	P3, T2, †
Teal BTMST	P3, T2, †
Galaxy BGMST	P3, T2, †
White WWMST	P3, T2, †
Cell BCMST	P3, T2, †
Wine RWMST	P3, T2, †
True Navy TNMST	P3, T2, †
Steel STMST	P3, T2, †
Grape RPMST	P3, T2, †
True Red TRMST	P3, T2, †
Graphite GRMST	P3, T2, †
Sandstone SAMST	†
Sea Mist MIMST	

UNISEX
STYLES



SHOW UP & STAND OUT!

Let your personality shine
each day with Smitten Scrubs'
ultramodern details and
fashionable color options.

smitten





A



B



COLORS & STYLES	
**	Heather Grey, 90% Polyester/10% Spandex.
†	Select colors while supplies last.

A 101002 | Smitten Women's V-Neck Scrub Top

CONTEMPORARY SLIM FIT

- 87% Polyester/13% Spandex
- Four-way stretch
- Three pockets
- Instrument pocket
- Badge loop

Sizes: XXS–3XL
Medium Length: 27"

B 101005 | Smitten Women's V-Neck Scrub Top

CONTEMPORARY SLIM FIT

- 87% Polyester/13% Spandex
- V-neck
- Knit shoulder insets, sleeves, and side panels for comfort and ease of movement
- Two top-entry angled pockets
- Additional accessory pocket
- Side vents

Sizes: XXS–3XL
Medium Length: 25¾"

Black BKP
Navy NVVP
Royal BEP
Graphite GRP
Steel STP
Caribbean CBP
Galaxy BGP
New Eggplant NRP
Ceil BCP
Heather Grey HGP
Hunter Green HGP
Wine RWP

Black BKP
Navy NVVP
Royal BEP
Graphite GRP



4-Way Stretch



Moisture Wicking



Fade Resistant



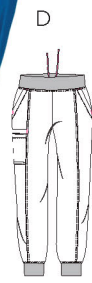
Chemical-Free
Wrinkle Resistance



C 201002 | Smitten Women's Straight-Leg Cargo Scrub Pants

- CONTEMPORARY SLIM FIT**
- 87% Polyester/13% Spandex
- Four-way stretch
- Four pockets
- Side vents
- Full drawstring waistband
- Regular: XXS-3XL (31½" inseam)***
- Petite: PXS-P2X (29" inseam)***
- Tall: TXS-TXL (33½" inseam)***

- Black BKPN
- Navy NVVPN
- Royal BEPN
- Graphite GRPN
- Steel STPN †
- Caribbean CBPN
- Galaxy BGPN
- New Eggplant NRGPN
- Cell BCPN
- Heather Grey HGPN **
- Hunter Green GHPN †
- Wine RWPN



D 201007 | Smitten Women's Banded-Bottom Jogger Scrub Pants

- CONTEMPORARY SLIM FIT**
- 87% Polyester/13% Spandex
- Knit waistband
- Internal Smitten pink drawstring
- Two angled hip pockets
- Right cargo pocket
- Knit jogger cuff
- Two back pockets
- Sizes: XXS-3XL**
- inseam 28¾"**

- Black BKPN
- Navy NVVPN
- Royal BEPN
- Graphite GRPN



E S201004 | Smitten Women's Tapered-Leg Cargo Scrub Pants

- CONTEMPORARY SLIM FIT**
- 87% Polyester/13% Spandex
- Knit waistband with internal elastic
- Internal Smitten pink drawstring
- Two angled hip pockets
- Right cargo pocket
- Knee darts
- Tapered leg
- Two back pockets
- Zipper leg detail
- Locking zipper pull
- Regular: XXS-3XL (30" inseam)***
- Petite: PXS-P2X (27½" inseam)***
- Tall: TXS-TXL (32" inseam)***

- Black BKPN
- Navy NVVPN
- Royal BEPN
- Graphite GRPN

MIRACLE FABRIC (87% Polyester/13% Spandex)
 Built to stretch the boundaries of any workday, our Miracle fabric is a sensational stretch fabrication that moves with you all day long.



MADE BETTER FOR YOU.

Featuring high-quality, durable fabric, functional features and flattering styles for all shapes and sizes, Landau lab coats are designed to last through your career.

Landau[®]
LAB COATS

Follow us on Instagram @landauniforms

WOMEN'S STYLES



A



A 3230 Landau Women's 5-Pocket Consultation Jacket

CLASSIC RELAXED FIT

- 65% Polyester/35% Cotton
- Five pockets

White (WWY)
 Sizes: 0-20, 40-44
 Length: 28 5/8" (Size 10)

B



B 8726 Landau Women's 3-Pocket Consultation Jacket

CLASSIC RELAXED FIT

- 65% Polyester/35% Cotton
- Three pockets
- Pen loops
- Princess seams

White Poplin (WWXY)
 Sizes: XSM-3XL
 Length: 31 1/2" (Size MED)

C



C 3039 Landau ProFlex Women's 2-Pocket Mid-Length Stretch Lab Coat

MODERN TAILORED FIT

- 95% Polyester/5% Spandex
- Lapel collar
- Two-way zipper
- Front princess seams
- Double-needle topstitching throughout
- Adjustable belt detail in back
- Two roomy curved pockets
- Instrument pocket
- Pen loops inside wearer's right pocket
- Back yoke
- Back seaming detail

White (WWFS)
 Regular: XSM-3XL
 Length: 31 1/2" (Size MED)



D



INTERIOR TABLET POCKET

D 3165 Landau Women's 5-Pocket Full-Length Notebook Lab Coat

CLASSIC RELAXED FIT

- 65% Polyester/35% Cotton
- Five pockets

White (WWXY)
 Sizes: 2-20, 40-42
 Length: 36 5/8" (Size 10)

>> Find more styles online LANDAUSCRUBS.COM



E

E 3600SC Women's Button Front Lab Coat

CLASSIC RELAXED FIT

- 65% Polyester/35% Cotton Sanded Twill
- Two top load pockets
- Side hand access
- Back vent
- Front princess seams

White (WWSC)
 Sizes: XSM-5XL
 Length: 35³/₄" (Size MED)



F

F 3153 Landau Women's 5-Pocket Full-Length Lab Coat

CLASSIC RELAXED FIT

- 65% Polyester/35% Cotton performance twill
- Five pockets
- Back princess seams

White (WWVC)
 Sizes: 0-20
 Length: 37⁷/₈" (Size 10)



G

G 3172 Landau Women's 3-Pocket Full-Length Lab Coat

CLASSIC RELAXED FIT

- 100% Cotton Twill
- Two lower pockets
- Instrument pocket
- Button closure

White (WWF)
 Sizes 0-20
 Length: 40¹/₄" (Size 10)



H

H 3155 Landau Women's 3-Pocket Full-Length Lab Coat

CLASSIC RELAXED FIT

- 65% Polyester/35% Cotton
- Three pockets
- Princess seams

White (WWY)
 Sizes: 0-20, 40-52
 Navy (BNP)* WSL
 Sizes: 4-20, 40-48
 White (WWXYA)* WSL
 Antimicrobial
 Sizes: 0-20
 Length: 37⁷/₈" (Size 10)

MEN'S STYLES



A



A 3224 Landau Men's 5-Pocket Consultation Jacket

CLASSIC RELAXED FIT

65% Polyester/35% Cotton
Five pockets

White Twill (WWT)
Sizes: 32-52, 38T-52T
White Poplin (WWY)
Sizes: 32-52
Lengths: 31 1/8" (Size 40)

Tall 32 3/4" (Size 40)
Tall (2" extra sleeve and length)



B

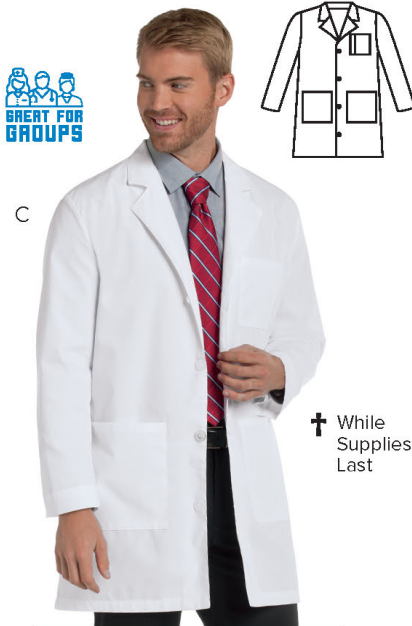
† While Supplies Last

B 1140 Landau Men's 4-Pocket Consultation Jacket

CLASSIC RELAXED FIT

65% Polyester/35% Cotton
Four pockets
Zip front

White (WWY)
Sizes: 32-56
Length: 31 1/8" (Size 40)



C

† While Supplies Last

C 3148 Landau Men's 3-Pocket Mid-Length Lab Coat

CLASSIC RELAXED FIT

65% Polyester/35% Cotton
Three pockets

White (WWY)
Sizes: 32-56
Length: 35 3/8" (Size 40)



D



INTERIOR TABLET POCKET

D 3174 Landau Men's 5-Pocket Mid-Length Notebook Lab Coat

CLASSIC RELAXED FIT

65% Polyester/35% Cotton
Five pockets

White (WWXY)
Sizes: 32-52
Length: 36 7/8" (Size 40)



E

E 3163 Landau Men's 3-Pocket Mid-Length Lab Coat

CLASSIC RELAXED FIT

- 65% Polyester/35% Cotton
- Three pockets

White (WWT) | Navy (BNP) †
 Sizes: 32-52
 Length: 35½" (Size 40)



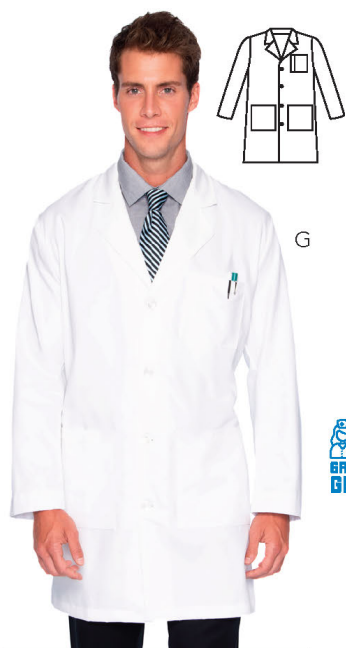
F

F 3166 Landau Men's 5-Pocket Mid-Length Lab Coat

CLASSIC RELAXED FIT

- 65% Polyester/35% Cotton
- Five pockets

White (WWXY)
 Sizes: 32-52
 Length: 35½" (Size 40)



G

G 3124 Landau Men's 5-Pocket Mid-Length Lab Coat

CLASSIC RELAXED FIT

- Five pockets

5.5 oz 65% Polyester/35% Cotton Sanded Twill (WWSC)
 6 oz 65% Polyester/35% Cotton Twill (WWVC)
 8 oz 100% Cotton Twill (WWF)
 Sizes: 32-56, Tall 38T-56T
 Length: 36¾" (Size 40)
 Tall (2" extra sleeve and length)



H

H 3043 Landau ProFlex Men's 5-Pocket Mid-Length Stretch Lab Coat

MODERN TAILORED FIT

- 95% Polyester/5% Spandex
- Chest pocket
- Two top-entry pockets with accessory tape
- Two additional pockets
- Side hand access
- Button closure
- ProFlex signature green, back neck detail
- Locker loop
- Back belt
- Back vent

Sizes: MED-2XL
 Length: 33¾" (Size 40)

MEN'S FULL LENGTH STYLES

† White Supplies Last



A

A 3139 Landau Men's 3-Pocket Full-Length Lab Coat

CLASSIC RELAXED FIT

65% Polyester/35% Cotton Twill
Three pockets

White (WWT)

Sizes: 32-52

Length: 40½" (Size 40)



B

B 3132 Landau Men's 3-Pocket Full-Length Lab Coat

CLASSIC RELAXED FIT

65% Polyester/35% Cotton
Three pockets

White (WWXY)

Sizes: 32-52

Length: 39½" (Size 40)



CUSTOMIZED YOUR WAY

Add the ultimate professional touch to your lab coat with custom embroidery. We offer over 300 colors of Madeira thread and up to 30 block or script fonts. We have many logos on file, or you can supply a PDF.



C



C 3145 Landau Men's 3-Pocket Full-Length Lab Coat

CLASSIC RELAXED FIT

- 65% Polyester/35% Cotton
- Three pockets

White (WWY) | Sizes: 32-56, 38T-56T
Length: 41³/₈" (Size 40)
Tall (2" extra sleeve and length)

D



D 3140 Landau Men's 3-Pocket Full-Length Lab Coat

CLASSIC RELAXED FIT

- Three Pockets
- Five-button closure

Sizes: 32-52
Length: 43³/₈" (Size 40)
White (WWT)
65% Polyester/35% Cotton Twill

E



E 3138 Landau Men's 3-Pocket Full-Length Lab Coat

CLASSIC RELAXED FIT

- 100% Cotton Twill
- Cloth knit buttons
- Three pockets

White (WWF)
Sizes: 32-52, 40T-50T
Length: 43³/₈" (Size 40)
Tall (2" extra sleeve and length)

UNISEX STYLES



A 3610SC Landau Unisex Mid-Length Lab Coat

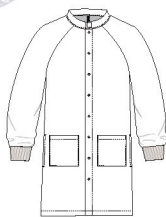
CLASSIC RELAXED FIT

- 65% Polyester/35% Cotton Sanded Twill
- Two top load pockets
- Chest Pocket
- Side hand access
- Button closure
- Front darts
- Back vent
- Sanded finish

White (WWSC)
Sizes: XXS-5XL
Length: 37¾" (Size MED)

LEVEL 2 BARRIER PROTECTION

B



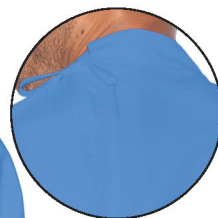
B 9135-20 Landau Unisex 2-Pocket Full-Length Lab Coat

CLASSIC RELAXED FIT

- 65% Polyester/35% Cotton and 96% Cotton/4% Spandex Cuffs
- 2** Level 2 barrier finish
- Two top-load pockets
- Side hand access
- Front snap closure
- Mock neck
- Knit cuffs

White (WWG)
Sizes: XSM-3XL
Length: 40¾" (Size MED)

C



BACK NECK TIE



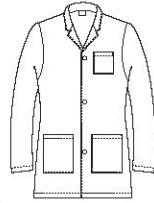
White WWG

Cell BCG

C 91500 Landau Essentials Unisex Full Gown

- 99% Polyester/1% Carbon w/ Teflon finish and 96% Cotton/4% Spandex Cuffs
- 2** Level 2 barrier finish
- Self-fabric back neck tie
- Back waist tie wraps to front for easy closure
- Band collar
- Knit cuffs

White (WWG)
Cell (BCG)
Size: One Size Fits Most
Center Back length: 44"



D 86002 Landau Scrub Zone Unisex 3-Pocket Mid-Length Lab Coat

CLASSIC RELAXED FIT

- 65% Polyester/35% Cotton
- Three pockets

White (White)
Regular: XXS-5XL
Length: 35¼" (Size MED)



E 3187 Landau Unisex 3-Pocket Full-Length Lab Coat

CLASSIC RELAXED FIT

- 65% Polyester/35% Cotton
- Three pockets

White (WWY)
Sizes: XXS-5XL
Length: 39" (Size MED)



White wwp

Ceil bcp

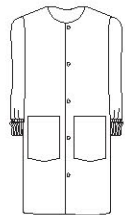


F 3176 Landau Unisex 2-Pocket Full-Length Lab Coat

CLASSIC RELAXED FIT

- 65% Polyester/35% Cotton and 96% Cotton/4% Spandex Cuffs
- Two top-load pockets
- Front snap closure
- Band collar
- Knit cuffs

White (WWP)
Ceil (BCP)
Sizes: XSM-5XL
Length: 41½" (Size MED)



G 3178 Landau Unisex 2-Pocket Full-Length Lab Coat

CLASSIC RELAXED FIT

- 65% Polyester/35% Cotton
- Two pockets
- Knit cuffs

White Poplin (WWP)
Sizes: XXS-5XL
Length: 41½" (Size MED)



COMPLETE YOUR WORKDAY FIT.

**Accessorize with our new,
stylish designs and personalize
your everyday workwear.**



A 24042 | Flat Front Bouffant Scrub Cap (Pack of 6)

55% Cotton/45% Polyester (Prints)

One Size: fits most

*Solid colors also available

54% Cotton/43% Polyester/3% Spandex

- Roomy scrub cap for big hair
- Internal sweat patch
- Side ties

- Buttons on each side
- Elastic back

WMSLD | Warm Solid Pack (Pack of 6)
2 Black, 2 Steel, 1 Pink, 1 Wine

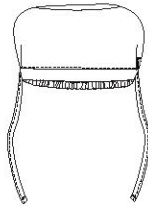


† While Supplies Last

COSLD | Cool Solid Pack (Pack of 6)
2 Black, 2 Navy, 1 Royal, 1 Ceil



† While Supplies Last



PRPK1 | Print Pack (Pack of 6)
3 x CCCCT, 3 x DNCCT



CCCCT
"Cupcakes"



DNCCT
"Donuts"

† While Supplies Last

PRPK2 | Print Pack (Pack of 6)
3 x CVCCT, 3 x BCCCT



CVCCT
"Black Carnivale"



BCCCT
"Black Chili Pepper"

† While Supplies Last

PRPK3 | Print Pack (Pack of 6)
3 x PRCT, 3 x SUCT



PRCT
"Pacific Rim"



SUCT
2 Way "Sushi"

† While Supplies Last

PRPK4 | Print Pack (Pack of 6)
6 x CCCCT



CCCCT
"Cupcakes"

† While Supplies Last

B 24043 | Bouffant Scrub Cap (Pack of 6)

72% Polyester/21% Cotton/4% Spandex/3% Nylon

One Size: fits most

*Solid colors also available

54% Cotton/43% Polyester/3% Spandex

- Bouffant style scrub cap
- Internal sweat patch
- Side ties

- Buttons on each side
- Elastic back

WMSLD | Warm Solid Pack (Pack of 6)
2 Black, 2 Steel, 1 Pink, 1 Wine

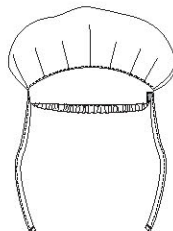


† While Supplies Last

COSLD | Cool Solid Pack (Pack of 6)
2 Black, 2 Navy, 1 Royal, 1 Ceil



† While Supplies Last



PRPK1 | Print Pack (Pack of 6)
3 x CCCCT, 3 x DNCCT



CCCCT
"Cupcakes"



DNCCT
"Donuts"

† While Supplies Last

PRPK2 | Print Pack (Pack of 6)
3 x CVCCT, 3 x BCCCT



CVCCT
"Black Carnivale"



BCCCT
"Black Chili Pepper"

† While Supplies Last

PRPK3 | Print Pack (Pack of 6)
3 x PRCT, 3 x SUCT



PRCT
"Pacific Rim"



SUCT
2 Way "Sushi"

† While Supplies Last

PRPK4 | Print Pack (Pack of 6)
6 x CCCCT



CCCCT
"Cupcakes"

† While Supplies Last

Fun treats for your FEET!



A L41011 | Landau Women's Compression Socks

72% Polyester/21% Cotton/4% Spandex/3% Nylon

- CDPT "Periodic Table"
- NLMH "Nurse Life Multi"
- GLBBC "Boo Crew" (Glow in the dark)
- NNMC "Nacho Nurse Multi"
- NVYU "Unicorn Navy"

One Size: fits 9-11



They're not just socks, they're smile makers. You'll find all kinds of moments to lift that scrub pant and give everyone the giggles.



A L50001 | Landau Men's Compression Socks
 80% Nylon/20% Spandex
 Antimicrobial

MCPZ "Multicolor Puzzle"
 GEBLW "Geos Black"
 GSGB "Grey Stripe Black/Grey"
 RBSN "Red/Blue Supernurse"
 RDCRS "Red Cross Stripe"
 GBCB "Green/Blue Comic Book"

One Size: fits 10-13





† While Supplies Last

B



† While Supplies Last

B



† While Supplies Last

B

B L41011 | Landau Women's Compression Socks

72% Polyester/21% Cotton/4% Spandex/3% Nylon

- BLLS "Blue Life Saver"
- PKBMW "Pink Bring Me Waffles"
- PNKFT "Pink Fight"
- BLCHT "Blue Cheetah"

One Size: fits 9-11



† While Supplies Last

B



C

C U40001 | Urbane Compression Socks

80% Nylon/20% Spandex
Antimicrobial

MCHT "Multi-Color Hot Temperature"

One Size: fits 9-11

>> More options at LANDAUSCRUBS.COM



† While Supplies Last

† While Supplies Last

A S403007 | Smitten Women's No-Show Socks
 75% Nylon/20% Polyester/3% Spandex/2% Rubber
 Interlude (INTRL)
 Harmony (HRMNY)
 One Size: fits 9-11

B S403001 | Smitten Women's No-Show Socks
 75% Nylon/20% Polyester/3% Spandex/2% Rubber
 Hard Rock (HRDRK)
 One Size: fits 9-11



† While Supplies Last

C S403008 | Smitten Compression Socks
 72% Polyester/21% Cotton/4% Spandex/3% Nylon
 White/Pink Striped Kitten (WPSK)
 Pink/Blue Get Whale (PBGWS)
 One Size: fits 9-11

D S403008 | Smitten Compression Socks
 Polyester/Cotton/Spandex
 Koalified Shot Caller (KSCR)
 Catscan Dogs Can't (CSDC)
 One Size: fits 9-11

>> More options at SMITTENSCRUBS.COM



A Get Loud Tote

Show them your style with Smitten's Get Loud Tote. This three-in-one bag offers you the flexibility you need to face anything your day throws at you. Complete with a pink see-through PVC tote encasing a removable printed leopard zip clutch with wristlet. Secure inner snaps ensure everything stays in its place while this fun wild design gives you a chance to stand out.

**100% clear PVC tote with
100% Polyurethane handles and bottom
Inner bag 100% Polyester/Nylon**



REMOVABLE WRISTLET
Snaps in and out



B

B Pixie Duffel Bag

Don't let the name fool you, this bag means serious business. This stylish two-in-one duffel bag is the perfect size for all your essentials, whether you are going to work, the gym or out on the town. It features exterior pockets and multiple interior pockets for plenty of storage. Grosgrain handle and back straps allow for easy carrying while a secure zipper ensures your essentials stay where they need to. A convertible base also transforms into a backpack for added functionality. This bag also features our iconic Smitten logo on the bag's exterior body and handles. It's official, Smitten has the bag that has you covered. We even threw in two pink hairband ties for good measure!

100% Nylon



C

C Blaze Backpack

Blaze your own trail with a backpack that was made to take you there. This 17"H x 11.5"W x 4.5"D backpack is equipped with adjustable padded shoulder straps, two side exterior mesh water bottle pockets and one reverse coil zipper pocket, top carry handle and flat base for upright support. Interior includes divided patch pocket on padded back and four mesh interior pockets for additional storage. Logo zippers are a subtle reminder that Smitten always has your back no matter where your journey takes you. Rock on in Smitten!

100% Polyester



Back

Front

D Wrist Taker

Risk it all! The Smitten Wrist Taker is totally worth it! This stylish, fun wristlet features a textured Smitten silver heart and wing logo with contrast pink stitching. Internal mesh pockets offer compact organization while a welt zipper pocket at back offers easy-access storage.

**Black 100% Polyester/Nylon bag with
100% Polyester mesh lining**

Landau



A

A Comfort | Our #1 Selling Shoe!

Unisex clog with an enhanced slip-resistant all-rubber outsole and removable pillow-top EVA contoured foot bed for shock-absorbing comfort and arch support. Higher wedge heel to reduce back strain. Closed back design for a secure fit and easy on-off entry. Antibacterial, moisture-wicking Polyou® sockliner keeps feet dry while minimizing odor. Good for high-fluid environments.

Black, White
5-12, M4-M13 whole sizes



B

B Energize

ScrubZone's lightweight unisex clog designed for a secure fit and easy on-off entry. Non-marking outsole meets ASTM F1677 Mark II Slip Resistant rating when tested on wet floors. Shock-absorbing EVA midsole ensures long-lasting comfort.

Black, White
5-12, M4-M13 whole sizes



I work in a hospital environment and this is the most comfortable shoe I have ever worn.

ONLINE REVIEW



C

C Vitality

New women's leather-exterior clog featuring our unique floral inlaid pattern. Complete with anti-fatigue rocker bottom, contoured foot bed and shock absorption to provide comfort. Memory foam inner sole and textured tread offer a comfortable and slip-resistant stride. Light shoe construction also offers stability and minimizes risk of ankle injury and discomfort.

Black, White
5-11 whole sizes
Tooled leather

† White Supplies Last

urbane



D Excel Mesh Athletic Shoe

Make your move in a shoe with true style. Urbane's Excel shoe features a multi-pattern knit and split leather suede design ensuring this shoe is fashionable, breathable and lightweight on your feet. Complete with shock-absorbing foot bed, slip-resistant rubber sole and bungee toggle lace for a secure fit, there is no place these shoes can't take you. These shoes are also 100% washable, making them easy to wear and easy to care for.

Pink or Green
Euro, 36-42 U.S. 5-11

† White
Supplies
Last



E Heartthrob

It's all about heart, and we've got it with Smitten's Heartthrob fashion shoe. This polyurethane-coated leather clog features quilted Smitten heart pattern for a look that is anything but sweet. A decorative bold Smitten pink band accents the shoe with a pop of color while memory foam midsole and anti-fatigue rocker bottom soles provide the comfort and shock absorption you need. It's time, show them your heart.

Polyurethane-coated patent leather
Euro 35-42, U.S. 5-11

† White
Supplies
Last



F Wild@Heart

Ready. Set. Safari! Nothing says fun like these Smitten, zebra-inspired clogs. Our polyurethane-coated patent leather clog with slip-resistant tread features a black and white zebra print pattern. A memory foam mid-sole and anti-fatigue rocker bottom provide the best in comfort and shock absorption so you can strut in style.

Zebra and Leopard
Polyurethane-coated leather
Euro 35-42 U.S. 5-11

† White
Supplies
Last



G Take Flight

G Take Flight

Give your feet wings in high tops that mean business. Featuring our signature Smitten logo, heart and wings. Smitten pink accent stripe adds a touch of flair while the traditional laces offer you a retro feel. Non-slip textured tread with iconic Smitten logo offers you a safe and stylish option to your everyday footwear.

100% Polyurethane leather upper
100% Polyester mesh knit inner
Rubber toe cap and bottom sole
Euro 35-42, U.S. 5-11

† White
Supplies
Last

IDENTIFY YOUR SIZE

Select the size that is the closest match to your body measurements according to the women's chart below.

TO TAKE YOUR MEASUREMENTS

BUST The measurement over the fullest part of the chest.

WAIST The measurement of the smallest indentation of the natural waistline.

HIPS The measurement of the fullest curve of the hip or approximately 8" below the waistline.

INSEAM/INSIDE LEG The measurement from the top of the inner thigh down to 1" below the ankle bone.

NOTE: For accurate measurements, pull the measuring tape snugly to your body and avoid stretching.

WOMEN'S APPAREL

ALPHA SIZE	XXS	XS	S	M	L	XL	2X	3X	4X	5X
DRESS/PANT	0	2-4	6-8	10-12	14	16	18-20	22-24	26-28	30-32
BUST	29-30	31-33	34-35	36-38	39-42	43-45	46-49	50-53	54-57	58-61
WAIST	22-23	24-25	26-28	29-31	32-34	35-37	38-41	42-45	46-49	50-53
HIPS	32-33	34-35	36-38	39-41	42-44	45-47	48-51	52-55	56-59	60-63

MEN'S APPAREL

ALPHA SIZE	XS	S	M	L	XL	XXL	3XL	4XL	5XL
CHEST	30-32	34-36	38-40	42-44	46-48	50-52	54-56	58-60	62-64
WAIST	25-27	28-30	31-34	35-38	39-42	43-46	47-51	52-55	56-60
HIPS	34-35	36-38	39-41	42-45	46-49	50-53	54-57	58-61	62-65

UNISEX

ALPHA SIZE	XXS	XS	S	M	L	XL	XXL	3XL	4XL	5XL
CHEST	27-29	30-32	34-36	38-40	42-44	46-48	50-52	54-56	58-60	62-64
WAIST	22-24	25-27	28-30	31-34	35-38	39-42	43-46	47-51	52-55	56-60
HIP	31-33	34-35	36-38	39-41	42-45	46-49	50-53	54-57	58-61	62-65

NOTE: Unisex inseams approximately 31".

WOMEN'S LAB COATS

ALPHA SIZE	XXS	XS	S	M	L	XL	XXL	3XL	4XL	5XL
NUMERIC SIZE	0	2-4	6-8	10-12	14	16	18-20	22-24	26-28	30-32
LAB COAT	0	2-4	6-8	10-12	14	16	18-40	42-44	46-48	50-52
BUST	29-30	31-33	34-35	36-38	39-42	43-45	46-49	50-53	54-57	58-61

All garments will measure larger than your body measurements to allow for comfort and ease of movement.

MEN'S LAB COATS

ORDER BY SUIT SIZE

